

[Transportation]

Tokyo - Komatsu (1 hour by air)

Komatsu - Fukui (1 hour by shuttle bus)

Tokyo - Fukui (3 hours and a half by train)

Nagoya - Fukui (2 hours by train / 2 hours and 50 minutes by bus)

Osaka - Fukui (2 hours by train / 3 hours and a half by bus)

Bunkyo Campus

School of Education / School of Engineering /

School of Global and Community Studies

3-9-1 Bunkyo, Fukui-Shi, Fukui

910-8507, Japan

Tel: +81-776-23-0500

Matsuoka Campus

School of Medical Sciences

23-3 Matsuoka Shimoaizuki, Eiheiji-cho, Yoshida-gun, Fukui

910-1193, Japan

Tel: +81-776-61-3111

Tsuruga Campus

Research Institute of Nuclear Engineering

1-2-4 Kanawa-cho, Tsuruga-Shi, Fukui

914-0055, Japan

Tel: +81-770-25-0021

<http://www.u-fukui.ac.jp/eng/>



UNIVERSITY OF **FUKUI**



Nurturing individuals from the regions who can shine on the world stage

Message from the President

At the University of Fukui, composed of 4 undergraduate schools: Education, Medical Sciences, Engineering and Global and Community Studies, and 3 graduate schools : Education, Medical Sciences, and Engineering, we provide comprehensive education that maximizes the abilities of each and every student. In addition, through unique learning in each school, we aim to nurture talented individuals with the ability to work in the globalizing and increasingly complex society.

In the School of Engineering, we aim to nurture engineers with a wide knowledge base and applied engineering skills through teaching fundamental and specialized knowledge and crossover learning into related fields. In the School of Global and Community Studies, which is in its second year since establishment, we have focused on intensification of foreign language education and practical specialized education such as with interdisciplinary education and problem exploration projects, so that we can nurture individuals who can examine and find solutions for world issues from a global perspective. In the School of Education, we are dedicated to the training of teaching staff. We use practical methods for learning (students and school staff regularly visit education-related sites), and we also have ongoing research and development on new education methods utilizing active learning. In the School of Medical Sciences, our medical science education has a high degree of internationality, and we educate highly

practical doctors and nurses who can cope with the ever-advancing healthcare profession.

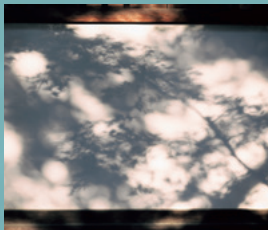
The graduates of the University of Fukui are active in various fields both in Fukui and outside the prefecture. In terms of employment, we have maintained a high employment rate and a low rate of job turnover, proving that the abilities of our students are evaluated highly in the company. At the same time, it is also the result of our students developing into strong individuals.

The University of Fukui is a "university where students can gain true ability." The entire teaching staff will do their best to support students to polish their skills and become individuals who have the communication skills to live in the current global environment and who can contribute to society.

I sincerely hope that you will choose to study at the University of Fukui, gain the skills you need to achieve your dreams, and take flight from Fukui to the world.



Mitsufumi Mayumi
Mitsufumi Mayumi, M.D., Ph.D., President



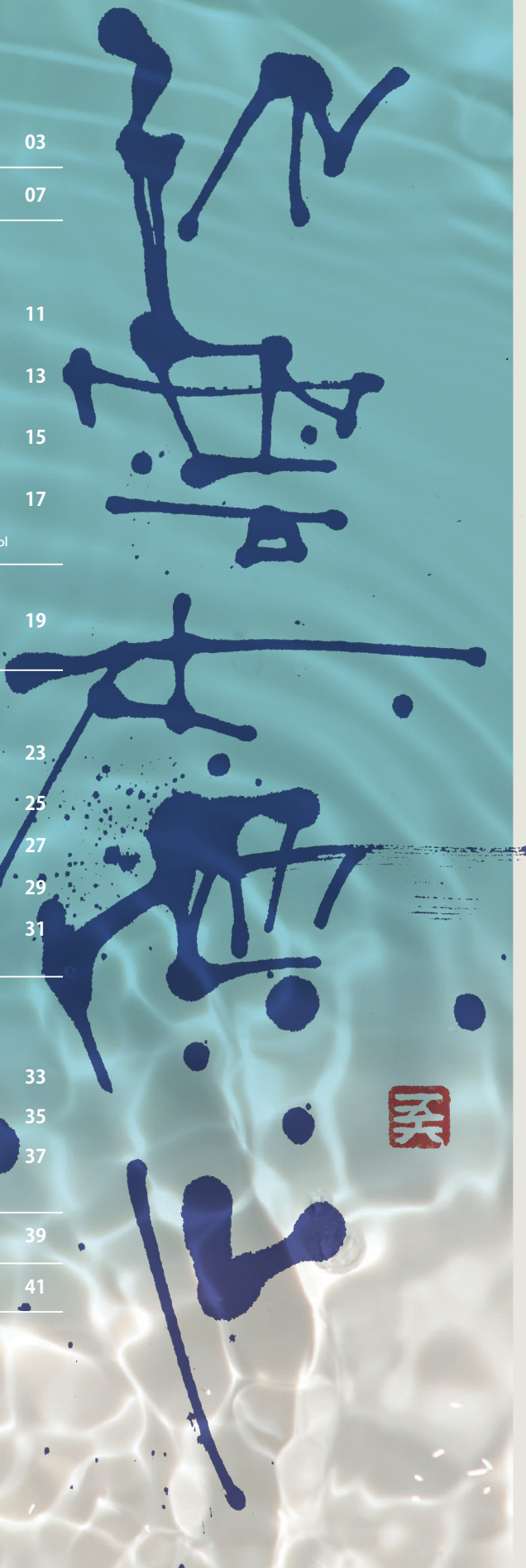
Contents

Fukui in Time: Etsuzan Jakusui	03
About the University of Fukui	07
Undergraduate & Graduate Schools	
Global and Community Studies	11
Education	13
Engineering	15
Medical Sciences	17
* School of Global and Community Studies does not have its graduate school	
Japanese Language Program	19
International Cooperation	
International Network	23
Global Outreach – Outbound	25
Global Outreach – Inbound	27
Student Exchange Programs	29
Community Outreach	31
Student Life & Activities	
Activities for International Students	33
Bunkyo Campus	35
Matsuoka & Tsuruga Campus	37
Future Career Path	39
Admission Information	41

孤雲本無心 | koun moto mushin / こうんもとむしん

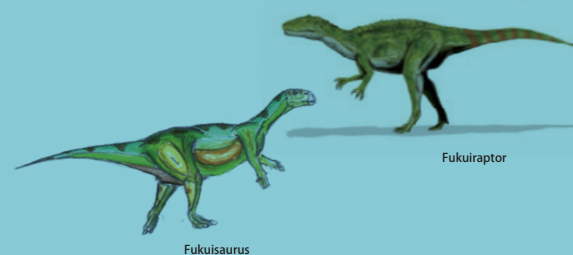
Freely floating clouds liberated from thought
This is a Zen saying that describes clouds in the sky floating
aimlessly through the air in the direction of the wind, and in the same way,
humans should be who they are without being swayed by
trivial obsessions or the pros and cons of the moment.
It is also used with the meaning of 'a window that reveals one's soul'.

© GOROH TAGAWA



Fukui in Time

Fukui has a long and rich history, witnessing a variety of unique events that continue today. For the student of Japanese culture, traditions, and folklore, Fukui offers perspectives on Japan which cannot readily be found elsewhere. It is fortuitously located along the Japan Sea, 169 km from Nagoya, 184 km from Kyoto, and 233 km from Osaka. In addition, it is a mere 87 km from Kanazawa. From its vantage point in the Hokuriku region (Chūbu), Fukui offers ample access to some of the most historic and fascinating sites in Japan. Yet its own history is both intriguing and illuminating.



Most people think about samurai, kimono-clad girls, manga, castles, and sushi when they imagine Japan. But dinosaurs? Come to Fukui. Millions of years ago, at the end of the Jurassic period, when the geographical environment saw temperate climate conditions, elevated sea levels, and numerous inland lakes, the *Fukuiraptor* dinosaur made its home here, as did the *Fukuisaurus*, during the Cretaceous age. They wandered the area easily, deposited eggs, and left behind a considerable number of significant bones, many of which are now housed in the Fukui Prefectural Dinosaur Museum, one of the world's three largest dinosaur museums. The numerous fossils on display in the museum demonstrate how these magnificent creatures were smaller than other dinosaurs, yet free-roamed in the area before climate change and volcanic activity brought about their inescapable demise. One can actually view numerous fossils at the Dinosaur Quarry.

Over time, various sects of Buddhism took hold and flourished in the area. In 1244, a monk from Kyoto, Eihei Dōgen, founded Eihei-ji Temple, a Soto Zen temple, in Fukui. The goal of meditation in Soto Zen is to truly “be” in each moment, and on a richly lush mountainside of cedar trees, Dōgen and his followers could practice “just sitting.” As Dōgen said in one of his many teachings, “If you are unable to find the truth right where you are, where else do you expect to find it?” For Dōgen, everything was in constant alteration—always interacting with everything else—however, through the Soto Zen practice of meditation one could come to understand one’s underlying primary empathetic association with all of reality. Quietly tucked away on the sea coast, Fukui is an inviting prefecture for reflection and meditation. Here, the truth is truly found “right where you are.” Happily, Eihei-ji Temple and Tenryu-ji Temple near the Matsuoka campus welcome foreign visitors.

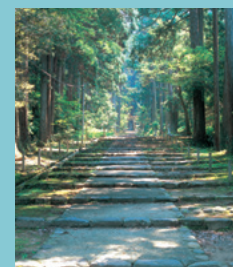


Eihei Dōgen

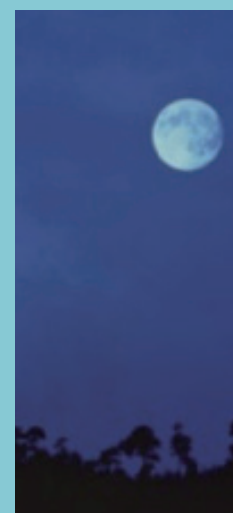
In 1576, the now-oldest surviving castle in Japan was built in Maruoka. It has been named an Important Cultural Property, and is one of only twelve surviving castles in Japan whose keep (strongest part of the castle) was never destroyed. The surrounding park and modest museum offer a pleasant opportunity to catch up on some of Fukui’s memorable moments.

“After supper, I set out for Fukui, five miles down the road, the way made difficult by falling dark.” So wrote Matsuo Bashō more than four hundred years after Dōgen founded Eihei-ji Temple. In 1689, the legendary Edo-era poet spent a few days traveling through what is now Fukui Prefecture as he followed his celebrated “narrow road to the interior.” In Maruoka town Bashō penned yet another of his transcendent haiku:

*Writing on my fan
Now it's torn in half
For memory's sake*



Heisenn-ji



Moonlight in Fukui

*Transparent moonlight
Just as it shone when Yūgyō
Carried sand to the shrine*



Myotsu-ji



Kusakabe Taro

The memories of Fukui, perhaps, are what sustained a local young man, a samurai, Taro Kusakabe, nearly 200 years later, in 1867, when he traveled to New Jersey to study mathematics and physical science at Rutgers University. Famously, Kusakabe was one of the very first Japanese people to study abroad. In fact, he became the very first Japanese person to graduate from an American university, albeit posthumously, having died just two weeks before graduation at the youthful age of 25.

Kusakabe’s English language tutor, William Elliot Griffis, later relocated in Fukui, where he taught physics, chemistry, and English to a feudal clan. His modest house still stands in central Fukui city. Eventually, the city of New Brunswick, New Jersey—where Rutgers University is located—and Fukui became sister cities, and have continued to sponsor joint events on occasion.



Matsuo Bashō



Kehi Jingu Shrine



William Elliot Griffis House, now Fukui City Griffis Museum



越山若水 | Etsuzan Jakusui / えつざんじゃくすい

The Echizen Mountains and Wakasa Waters
This is the traditional name for Fukui,
in praise of the clear waters of Wakasa and the
beautiful mountains of Echizen.



Maruoka Castle

These three tales of Dōgen, Bashō, and Kusakabe —about roaming, exploration, and discovery—point simultaneously to and from Fukui.

For generations, the inhabitants of Fukui-ken have witnessed cultural gains by those who have come here as well as by those who have gone out to explore the value of what could be brought home. Now, in the 21st century, the goings in and out of Fukui have been dramatically expanding, as young people from around the world follow global aspirations of knowing more about Japan or, conversely, as Japanese university students pursue their ambitions of investigating the world outside of Japan. The traditionally hidden location of Fukui is now more apparent in the global arena.



Echizen lacquerware

The centuries have brought change and growth to Fukui. Back in the 6th century, among the rolling hills and expansive fields of central Fukui, the production of lacquerware using the sap of the stately lacquer tree was in full swing in the town of Kawada in Sabae city. The creation of stunning bowls and other implements is still done today within a number of independent family factories. A person can take a day trip to one of these factories and create a variety of lacquer tableware.



Yet the Sabae city area is not limited to a single artisan industry. About 1500 years ago, a woman called Kawakami Gozen first taught local villagers in Echizen how to make washi paper, and there are still more than fifty factories today which produce this time-honored delicate Japanese paper. At one point, Japanese banknotes were made from Echizen washi. For the lover of delicate stationery—and simply gorgeous paper, to the eye and to the touch—the possibility of generating one's own washi is an experience unlike any other. With a short train ride, one can enter the past and become a traditional artisan for an afternoon.



Kawakami Gozen, Paper Goddess

What one now finds in Sabae city, almost more than anything else, are well-known eyeglass frame makers. More than 100 years ago, the design and production of eyeglass frames started in Sabae city as an attempt to branch out from its traditional—yet singular—agricultural economic base. As one of today's most well respected "Made in Japan" products, the eyewear frames made in Fukui account for 90% of all eyeglass frames produced in Japan. Moreover, each of the companies continues to reinvent its practices to keep abreast with worldwide competition. A visit to some of these factories is worthwhile. Companies employ both Japanese and international workers, which has led to the introduction of authentic foreign cuisine in the area, principally Mexican and Thai restaurants.



Sakae eyeglass frames



The long and rich traditions of Fukui continue to thrive and innovate today. With the influx of more foreigners, the Fukui International Activities Plaza and the local International Club are always planning a growing number of social and educational activities so that international visitors and residents, along with local Japanese people, have ample opportunities to share their cultures, to learn new languages, and to enjoy one another's company. There is certainly never a lack of things to do in the city or the wider prefecture—from beaches to forests to lakes and mountains. Taking a break to view exquisite iris gardens at Buddhist temples in the spring, swimming in the pristine waters of Mikuni Beach or Suishohama ("Crystal") Beach in the summer, mountain hiking near the Ichijōdani Asakura family historic ruins on a brisk autumn day, and snowboarding or skiing at the popular Ski Jam Katsuyama (1320 max elevation) in the winter are just a few of the diverse pursuits for the most active and inquisitive residents.

For the person merely seeking a moment of silence alone, within walking distance of the Fukui Castle and near the Fukui City History Museum, there is the lovely Yokokan Garden, a serene place of solace and contemplation. The villa, the gardens, and the moat immediately recall the site's Edo beginnings, while the carp-filled pond with natural stone bridges and powerful stone lanterns give one a space in which to experience Fukui at its simplest.

As can be seen, Fukui is the center of an expansive and remarkable area of Japan. By train, all points of interest are possible to reach: the temples of Kyoto, the shops in Osaka, the entertainment in Nagoya, and the modern art museum and geisha town of Kanazawa, not to mention the ancient Himeji-jo castle in Hyogo and the Hiroshima Peace Memorial Museum. Well planned day trips will always return one to Fukui by evening—exhausted but enlightened. Once home, the most rewarding end to a day's travels is to indulge oneself in some of Fukui's incredible "eats": sauce katsu don pork cutlet, Echizen oroshi soba noodles, Volga rice, ayu fish, ekimae chuka soba, or sushi, reputed to be the best in Japan because of its freshness. For the more pricey palate, Echizen crab (in season) and wagyu beef are a must. Then, for the bravest of souls, there is always fugu (blowfish).

As you slowly meander back to your room, if you are lucky, you just might catch Bashō's "transparent moonlight" along your way! Should that happen, you will have taken in the soul and spirit of Fukui "for memory's sake."



Ajmanoen



Suishohama

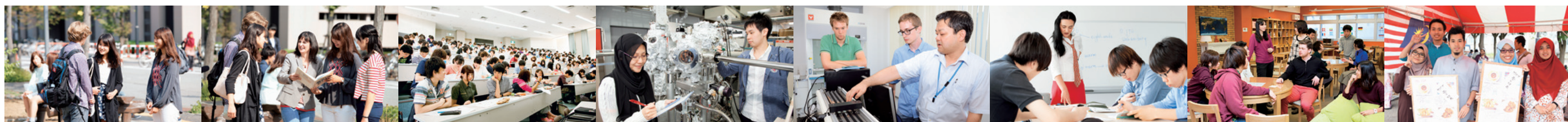


Yokokan



Kuzuryuko





FACTS & FIGURES

■ Mission

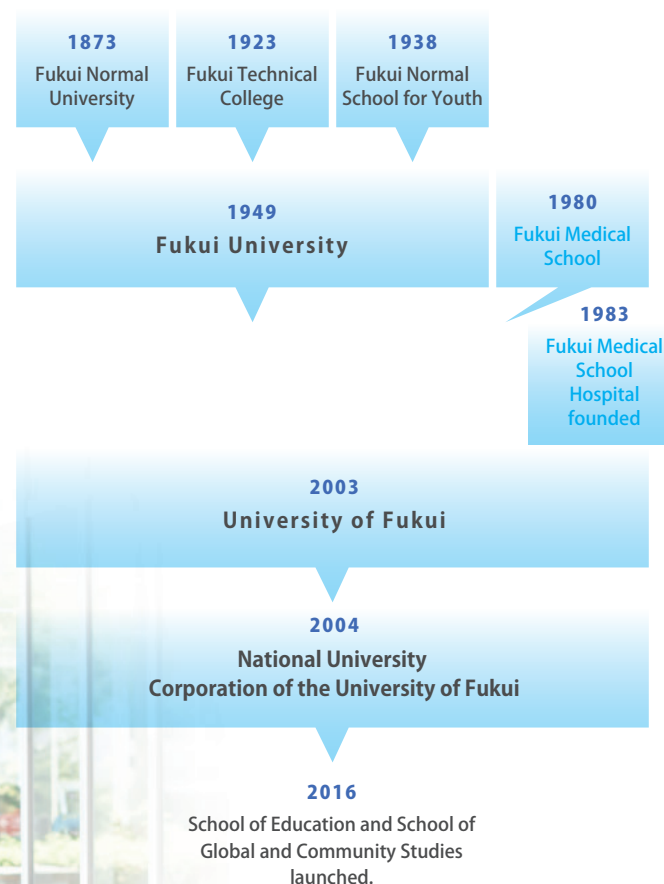
Serving as a center of academic and cultural activities, the University of Fukui aims to promote world-class education and research in science and technology for peoples' well-being and to provide advanced medical services to local residents while maintaining a high sense of ethics.

To this end, we will develop human resources who are capable of contributing to society on the local, national, and global levels.

We will continue to further our own original and region-specific studies in education, pursue highly advanced research in science, technology, and medical sciences, and also provide professional medical care services.



■ History



■ Campuses



BUNKYO campus
(School of Global and Community Studies / School of Education / School of Engineering)



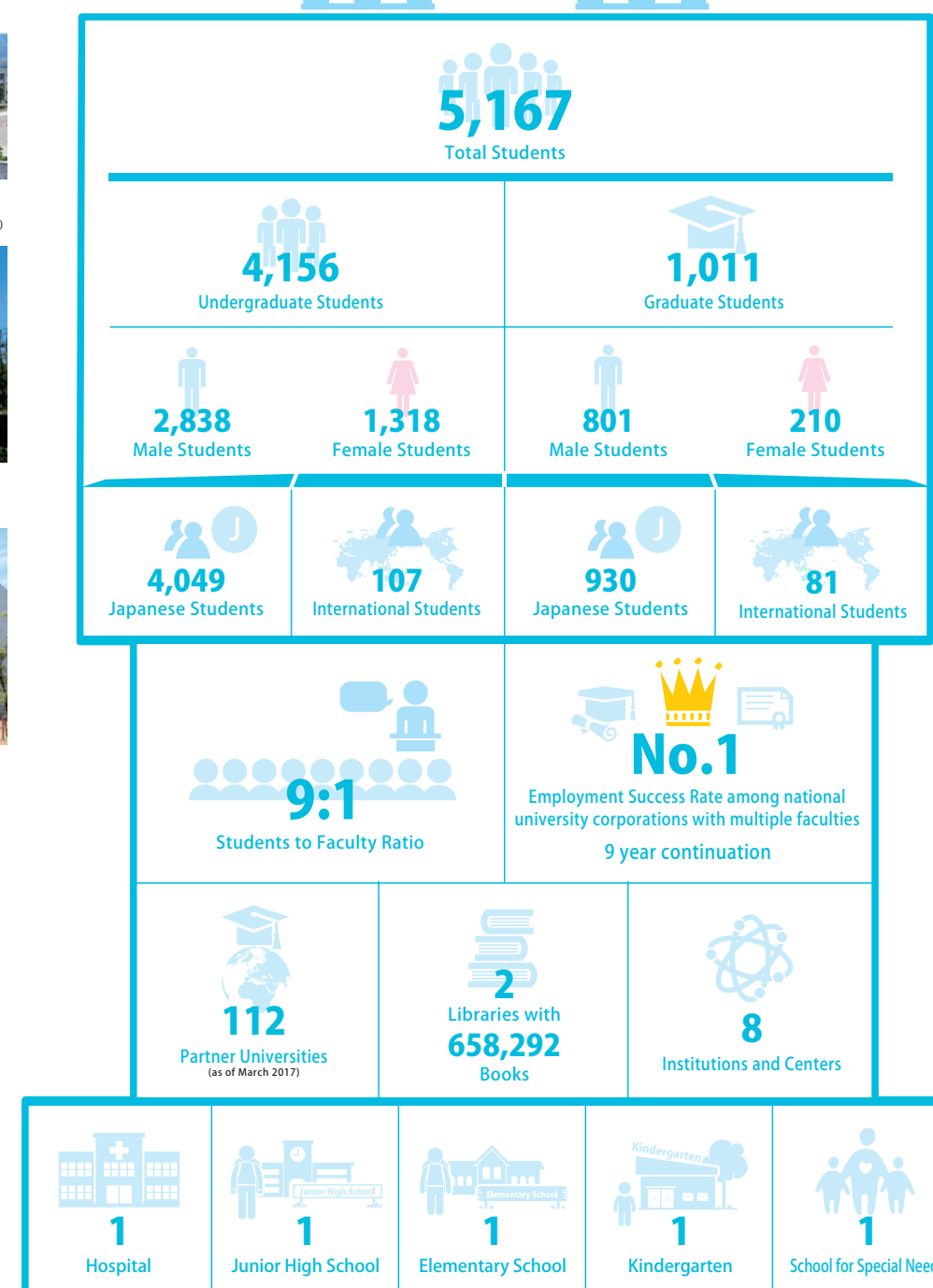
MATSUOKA campus
(School of Medical Sciences)



TSURUGA campus
(Research Institute of Nuclear Engineering)



■ University of Fukui by Numbers as of May 2016





My future found at University of Fukui



Schools | The University of Fukui has four schools and three graduate schools.
In April 2016, we have launched a new school called "Global and Community Studies."



School of Global and Community Studies

◎ Department of Global and Community Studies

School of Education

◎ Teacher Education Program
Primary Education Course
Secondary Education Course

Graduate School of Education

◎ Master's Program
School Education
◎ Professional Graduate School
Professional Development of Teachers

School of Medical Sciences

◎ College of Medicine
◎ College of Nursing

Graduate School of Medical Sciences

◎ Master's Program
Nursing
◎ Doctoral Program
Integrated and Advanced Medical Course

Academic Calendar

2017 Spring	2017 Fall
Start of Spring Semester April 1	Start of Fall Semester October 1
Classes Start April 7	Classes Start October 2
Exam Week July 31- August 4	Winter Break December 27-January 4
Summer Vacation August 7- September 30	Exam Week February 2-8
End of Spring Semester September 30	Spring Vacation February 9-Early April
	End of Fall Semester March 31

School of Engineering

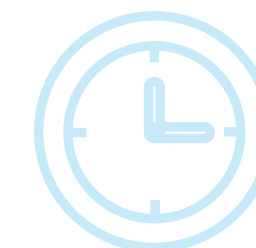
◎ Department of Mechanical and System Engineering
◎ Department of Electrical, Electronic and Computer Engineering
◎ Department of Architecture and Civil Engineering
◎ Department of Materials Science and Biotechnology
◎ Department of Applied Physics

Graduate School of Engineering

◎ Master's Program
Mechanical Engineering
Electrical and Electronics Engineering
Information Science
Architecture and Civil Engineering
Materials Science and Engineering
Applied Chemistry and Biotechnology
Applied Physics
Human and Artificial Intelligent Systems
Frontier Fiber Technology and Science
Nuclear Power and Energy Safety Engineering
◎ Doctoral Program
Advanced Interdisciplinary Science and Technology

Class Time

1st Period 8:45 ~ 10:15
2nd Period 10:30 ~ 12:00
3rd Period 13:00 ~ 14:30
4th Period 14:45 ~ 16:15
5th Period 16:30 ~ 18:00





School of

Global and Community Studies



Global and Community Studies is an interdisciplinary field that examines the interplay of local and global change and the challenges facing local communities and global societies such as an aging population, declining birthrate, global warming, global immigration, cultural conflicts, social instability, and so forth, in the world of an accelerating globalization today.

The School of Global and Community Studies (GCS) prepares students to be able to work together with people of different cultural backgrounds to identify and resolve such challenges and to contribute to local community revitalization and development of global societies by nurturing the following knowledge and skills for students: English language proficiency, communication, intercultural understanding, critical thinking, problem solving, a wide range of knowledge from the humanities and social sciences to natural sciences as well as professional expertise.

During the first year, students participate in intensive English language for academic purposes classes. Class sizes are kept small to encourage maximum student participation and tailored instructor feedback. They

will continue to take academic English courses (composition, writing and reading) in the 2nd year and aim to obtain a TOEFL score of 550 or above as an ultimate goal.

At the start of the second year, students will choose either one of the two learning approaches: global approach (learning based on global perspective) or community approach (learning based on community perspective) as per their preference. Global Approach students are required to study abroad for one or two semesters and Community Approach students are recommended to study at least one semester at one of our student exchange partner institutions.

Students will also take Project-Based Learning courses from the first through the third year (Global Approach students can take them in the fourth year as well). The courses are conducted either in English or in Japanese. Students will be divided into small groups and visit local communities, schools, companies, business sectors, government offices and NGOs as per the topics they will examine. Students will deepen their understanding of their tasks and obtain required knowledge and skills, and at the

end of the classes, they are required to identify problems and present concrete solutions through an ongoing project.

The courses offer students specific knowledge of regions, develop their community-based research skills, and cultivate their ability to solve problems by participating in various projects. Through this firsthand learning (learning by doing) of local particularities and communities, students will gain an understanding of the impact of global change and the relation between local and global change.

Students also take courses from a wide range of disciplines so that they are prepared to tackle complex issues. In particular, students are required to take courses in the following three areas: Life Environment, Technology, and Medicine.

Identifying multiculturalism and diversity as core values, the GCS program strives to promote international education and enhance international student mobility through student exchange programs. For that purpose, it has adopted a compatible international academic system: course codes, a cap system, 13-step grading and GPA systems, honors degree, and so on. From 2018, GCS will set a GPA 2.0 as a requirement for graduation—part of the University of Fukui's commitment to quality assurance of the GCS education.

International students who hope to complete their degree at the University of Fukui in the GCS program will be able to obtain Japanese and English fluency, a deeper understanding of Fukui and Japan, and a strong network with Japanese people and societies. Moreover, in this globalizing world, they will gain the other 21st century skills and abilities needed to play a leading role in Japan, Asia, and the world.

Courses Taught in English

The main language of instruction at the University of Fukui is Japanese. However, there are intensive English language courses and a variety of content courses taught in English in the School of Global and Community Studies.

<English Language Courses>

ENG085	TOEFL Preparation
ENG091a	English Reading III
ENG091b	English Reading IV
ENG092a	English Writing III
ENG092b	English Writing IV
ENG100a	English Composition I
ENG100b	English Composition II
ENG101a	Academic Reading I
ENG101b	Academic Reading II
ENG200a	Academic English Writing I
ENG200b	Academic English Writing II

<English Taught Courses>

SOC100	Introduction to Global and Community Studies*
RES110	Introduction to Research E
RES260	Qualitative Research E
JLT100	Introduction to Japanese Language Studies*
JLT210	Teaching Japanese as a Second Language for Communication*
JLT300	School Education in Japan
ICS110	Project-Based Learning Introduction – B
ICS200	Project-Based Learning I
ICS250	Project-Based Learning II
ICS300	Project-Based Learning IIIA
ICS350	Project-Based Learning IIIB
ICS301	Project-Based Learning IIIC
PLS210	International Relations
PLS220	International Policies
MLC350	International Communication
LLL100	Public Speaking
B3020	Introduction to Philosophy (Common Ed. credit)
LLL200	English as a World Language
LLL210	Introduction to Linguistics
LLL230	The Japanese Language Through Time
LLL250	Introduction to American English
LLL260	Introduction to Phonetics and Phonology for EFL Learning
LLL300	Second Language Acquisition
LLL350	Psycholinguistics
ISS100	Intercultural Communication
ISS250	Psychology
ISS300	Human Development
ISS400	Game-Based Learning
EDU210	Social Justice Issues in Education
ISS200	Intro. to Japanese Traditions and Culture
HUM100	World Music
HUM300	Humanistic Traditions in the West
LIT200	American Short Stories
LIT300	Topics in American Literature
LIT310	Social Issues in Asian American Literature
LIT400	Irish Literature
LIT410	Comparative Literature
LIT420	Women in Literature
TESIS410	Thesis

* The courses are taught partly in Japanese.



School / Graduate School of Education



The School of Education aims to nurture individuals who are highly specialized and actively involved in the diverse dimensions of school education. Students will specialize in their main course and subcourse with interdisciplinary and systematic learning.

The objectives are for students to gain deeper specialized understanding of learning and the development of learners, and enable widespread contributions to the development of society through the cultivation of teaching staff with the ability to interact with the community.



School of Education

— Teacher Education Program

◎ Primary Education Course

Elementary Education Subcourse
Special Needs Education Subcourse

◎ Secondary Education Course

Humanities and Social Education Subcourse
Science and Mathematics, Living Environment
Studies Education Subcourse
Art and Sports Education Subcourse

— Affiliated Schools

- ◎ Kindergarten
- ◎ Compulsory Education School
- ◎ School for Special Needs Education
- ◎ Education Center of Nature

Graduate School of Education

◎ Master's Program

School Education

Elementary Education Course
Humanities and Social Education Course
Science and Mathematics,
Living Environment Studies Education Course
Art and Sports Education Course

◎ Professional Graduate School

Professional Development of Teachers

Division for Coordination of Professional Learning Communities
Division for Management of School Reconstruction

■ Features of the School

Undergraduate Education: Primary Education Course / Secondary Education Course

● Life Partner Program

Through practical training at elementary/junior high schools and visit to the pupils at home, students can assist pupils/students who have worries or other problems to gain confidence and independence by having a conversation, playing with pupils, and their learning support.

By experiencing these environments and repeating case conferences in class, students can learn, in a practical way, the difficulty of actual education environments and the importance of responsibility.

● Network of Inquiry

This is a class program held for students studying to be teachers to deepen their understanding and specialized skills in terms of non-textbook curricula such as the integrated study and special activities classes.

Classes help to increase their knowledge of curriculum theory, and every other Saturday between May and December, elementary and junior high school students gather at the university to participate in exploration activities such as puppet shows, making hot air balloons, cooking and street corner surveys.

Graduate Education: School Education / Professional Development of Teachers

● School Based System

Students from the Graduate School of Education are sent to school sites, so the classrooms for the Graduate School are in fact those of elementary and junior high schools (affiliated schools, cooperating schools).

Teaching staff and research students look at the issues faced by the school and work together to create practical solutions.

Academic Programs for International Students

■ University of Fukui Student Exchange Program

Based on exchange agreements with the University of Fukui, students from partner universities can study at the University of Fukui for either six or twelve months, while they are registered as regular students at their home universities.

Under this program, students can take courses which are taught in Japanese or English, receive research instruction and deepen their understanding of specialized knowledge and of Japan. For more details about this program, please see pp. 29-30.

■ In-service Training Program for International Teachers of the University of Fukui

This program is for Japanese Government (MEXT) scholarship students, and is designed for current teaching staff of primary and secondary education facilities and staff of teacher training schools overseas. After six months of Japanese language training, international teachers study and research on Japanese education methods for one year.

In addition, there are regular visits to affiliated elementary and junior high schools to see education in practice, as well as various visits organized by local governments and citizens' groups. The international students in this program come from Asia, Central/South America, Africa, Europe and various other countries, and their participation at the school, as teachers from other countries, represent a prime opportunity for intercultural interaction and mutual learning, and for Japanese students to make comparisons with the education of Japan. The program plays a significant role in promoting the internationalization of the graduate school.

Features of the Program

- ◎ Comprehensive individual instruction
- ◎ Instructors co-create curricula that meet the needs and interests of international teachers

■ Course in Japanese Language and Japanese Culture

This program is for Japanese Government (MEXT) scholarship students, and it aims to improve Japanese language ability and understanding of Japanese culture and affairs, in a Japanese university.

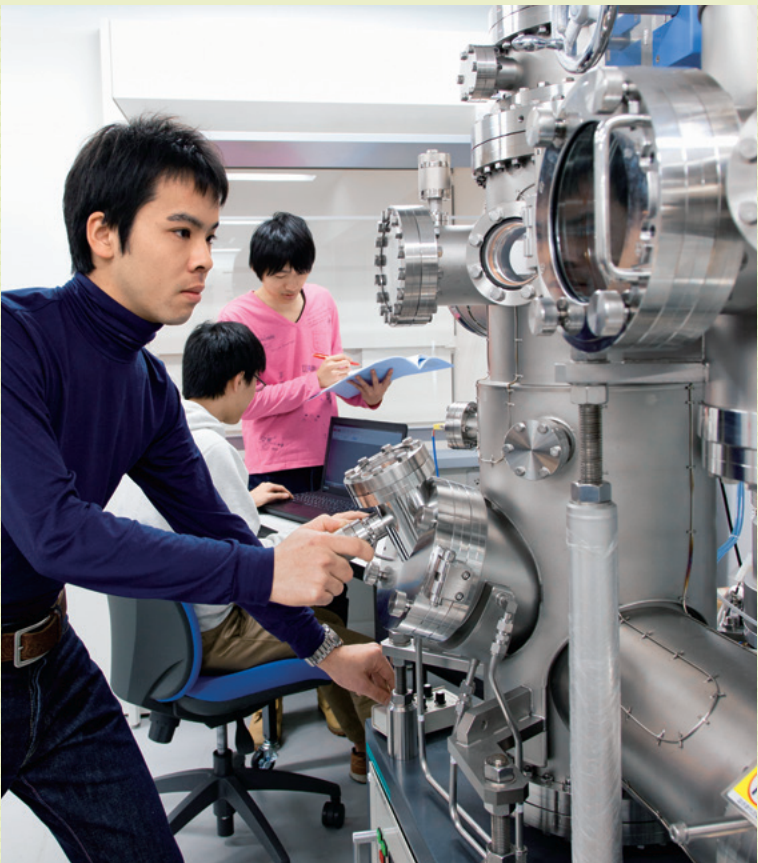
Features of the Course

- ◎ The course aims to improve Japanese language ability and deepen understanding of Japanese culture.
- ◎ The course aims to encourage students to obtain credits through participation in common education subjects and specialized subjects together with other international students and Japanese students from other classes.
- ◎ Students of the course must take at least 7 subjects per semester.
- ◎ Class subjects: There are no special class subjects for international students of this program.



School / Graduate School of Engineering

The educational concept of the School of Engineering is “Production of Global IMAGINEERS.” ‘IMAGINEER’ is a term that combines the words ‘imagine’ and ‘engineer.’ We produce engineers who have a dream with a global perspective, and who will realize that dream for a society where everyone can live peacefully and safely. This concept is shared by our students and teaching staff.



Academic Programs for International Students

Undergraduate Program

Department of Mechanical and System Engineering

- Mechanical Engineering Course
- Robotics Course
- Nuclear Safety Engineering Course

Department of Electrical, Electronic and Computer Engineering

- Electronics Engineering Course
- Electrical, Communications and Systems Engineering Course
- Computer Science Course

Department of Architecture and Civil Engineering

- Architecture and Building Engineering Course
- Civil Engineering Course

Department of Materials Science and Biotechnology

- Frontier Fiber and Materials Engineering Course
- Materials Chemistry Course
- Biotechnological and Biomedical Engineering Course

Department of Applied Physics

Master's Program

Global Engineering Program for International Student Master's Degree (GEPIS: 2 Year Program)

GEPIS provides the opportunity for international students to study various fields of engineering and to obtain a Master's degree. There are 24 fields in 10 majors:

Mechanical Engineering

- Materials Design and Manufacturing Engineering
- Thermal and Fluid Systems
- System Control Engineering

Electrical and Electronics Engineering

- Electronic and Optical Devices
- Energy Engineering
- Systems Engineering

Information Science

- Information Science

Architecture and Civil Engineering

- Environmental Design and Structural Engineering
- Urban and Architectural Design

Materials Science and Engineering

- Applied Materials Chemistry
- Intelligent Materials
- Production and Processing Engineering

Applied Physics

- Quantum Physics and Mathematical Sciences
- Experimental Applied Physics
- Chemical Physics

Applied Chemistry and Biotechnology

- Applied Chemistry and Biotechnology

Human and Artificial Intelligent Systems

- Advanced Intelligence Systems
- Advanced Informatics and Machinery

Frontier Fiber Technology and Science

- Frontier Fiber Technology and Science

Nuclear Power and Energy Safety Engineering

- Nuclear Engineering
- Energy Safety and Symbiosis Engineering
- Nuclear Power Plant Safety Engineering
- Nuclear Power Plant System Safety Engineering

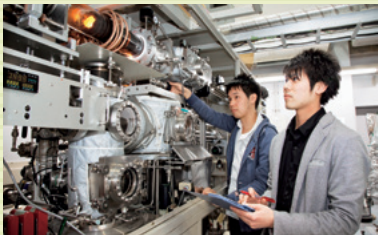
Doctoral Program

Global Engineering Program for Research and Development Doctoral Program in Graduate School of Engineering (GEP for R & D: 3 Year Program)

GEP for R&D aims to nurture individuals who are equipped with highly developed practical skills and are capable of being industry leaders both in and outside of Japan. The program prepares international students to acquire advanced research skills in their specialized field as well as gain a deep understanding and knowledge of Japanese culture and Japanese corporate strength through introductory education before and after enrollment, and specialized education and practical education after enrollment. There are 10 fields in 1 major:

Advanced Interdisciplinary Science and Technology

- Applied Physics
- Molecular Engineering
- Applied Chemistry and Biotechnology
- Materials Processing
- Intelligent Information Systems
- Electrical and Electronics Engineering
- Energy Systems
- Architecture and Civil Engineering
- Frontier Fiber Technology and Science
- Nuclear Power and Energy Safety Engineering



University of Fukui Student Exchange Program

Students from our partner universities which have student exchange agreements can study at the University of Fukui for either 6 months or 12 months. Exchange students can choose a program from 2 options: courses or research instructions taught in English; courses or research instructions carried out mainly in Japanese. For more details about this student exchange program, please see pp. 29-30.

As for the English taught program, students can take courses from the following five Engineering fields:

- Mechanical and System Engineering (MSE)
- Electrical, Electronics and Computer Engineering (EEC)
- Architecture and Civil Engineering (ACE)
- Materials Science and Biotechnology (MSB)
- Applied Physics (AP)

Features of the School

Practical Skills

- Through lectures given by business people
- Intellectual property subjects
- PBL (Project Based Learning), etc.

Broad Specialist Areas

- Various options in graduate research
- Specialist/foundation joint subjects
- Sub-specialist subjects

Language Skills

- Language learning is undertaken through the Language Instruction Program, which improves students' abilities of practical conversation and presentations

Internship Opportunities

- Information of internships at companies in Fukui Prefecture and elsewhere in Japan will be well provided

Engineering Ethics

- Ethics subject to understand the system of moral principles and the obligations to the society as an engineer

Active Learning

- Self-led experimental learning, reverse classes etc.

Liberal Arts Education

- Broad range of knowledge and general education in order to play an active part in civic life



School / Graduate School of **Medical Sciences**

"With Love and Medicine, Making People and Society Sound"

In 2017, we will launch our new motto "With Love and Medicine, Making People and Society Sound," followed by:

The Love of Wisdom, Seeking the Truth —
This is a form of love which Plato, the Greek philosopher, and Hippocrates, the Father of Medicine, enthusiastically believed in, the most rigorous form of inquiry where we know our ignorance, dedicate ourselves to the world of truth, and continuously encourage ourselves to seek the truth. It is a love based on respect for all human beings. We study and practice state-of-the-art knowledge and techniques of

medicine and nursing and promote research activities to explore the future medical and nursing sciences.

The Love for People, Respecting Their Lives and Empathizing with Them —
This is a thoroughly altruistic form of love where we intend to utilize our knowledge and wisdom for the sick and healthy people who all live their daily lives. Ryosaku (Haku-o) Kasahara (1809-1880), a Dutch-school doctor of Fukui Domain, was a typical doctor who lived his life with altruistic love. With love for wisdom, he continued to explore state-of-the-art medicine

without being influenced by the old medicine and customs, and tried to prevent an epidemic of smallpox which people feared as a fatal disease. At the same time, he really devoted his whole life to vaccinate as many people as possible against smallpox and to make people of Fukui Domain healthy. The idea of love appears first in the school song of Fukui Medical School (1978- 2003) from which our school was established. We educate and produce a number of doctors, nurses, and researchers with love for wisdom and people and we contribute to make people and society healthy.

School of Medical Sciences

- ◎ College of Medicine
- ◎ College of Nursing

Graduate School of Medical Sciences

◎ Nursing (Master's Program)

- Basic Nursing
- Community Health Nursing
- Adult Health Nursing
- Cancer Nursing
- Gerontological Nursing
- Maternal and Child Health Nursing
- Disaster Nursing

◎ Integrated and Advanced Medical Course (Doctoral Program)

- Life Sciences Course
 - Molecular Medical-Sciences
 - Highly Developed Biological Systems of Human
 - Bio-signaling in Biomedical Sciences
 - Medical Microbiology
 - Medical Functional Imaging
- Advanced Biomedical Sciences Course
 - Oncology
 - Peproductive and Perinatal Medicine
 - Ontological Medicine
 - Heavy Ion Treatment
 - Regenerative Medicine
 - Human Growth and Development
 - Pathophysiological Analysis and Regulation
 - Medical Information of Pathophysiology
 - Medical Imaging for Pathophysiological Information
- Comprehensive Community Medicine Course
 - Special subjects that is focus on clinical fields which are concerned with Community and General Medicine, Emergency Medicine and Family Medicine.



Overseas Medical Training Program

The University of Fukui provides students a variety of opportunities to experience medical systems in several overseas countries.

Airlangga University (Indonesia)

[Period : approximately 2 weeks]

Program content :

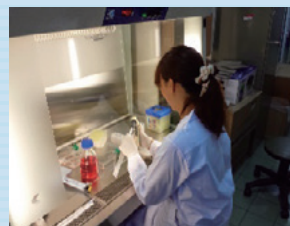
- ◎ Conduct research relevant to infection diseases in a team
- ◎ Present findings
- ◎ Interact with overseas medical students

UK Advanced Nursing Training Program

[Period : approximately 10 days]

Program content :

- ◎ Visit universities and affiliated hospitals
- ◎ Take lectures and seminars on advanced nursing systems in UK



Nursing (Master's Program)

Our aim is to cultivate certified nurses, educators and researchers, who acquire advanced knowledge of nursing practices. Students will acquire broad knowledge and practical skills and competencies, which are the foundation of nursing, as well as research competencies in specialized areas.

Research Fields

- ◎ Fundamental and Community Health Nursing
- ◎ Adult and Gerontological Nursing
- ◎ Maternity Nursing
- ◎ Disaster Nursing



Integrated and Advanced Medical Course (Doctoral Program)

Our aim is to cultivate independent researchers and clinical medicine researchers who possess outstanding research abilities and specialized skills, and General Practitioners, Emergency Physicians, and Family Physicians who have the clinical research ability to contribute to society and the competence of educational leadership.

Life Sciences Course

This course includes not only subjects relevant to life sciences, but also course work on experiment techniques such as gene manipulation, data processing, and methods to revise dissertation. Throughout the course, students will also acquire the ability to conduct research individually as well as the specialized knowledge in life sciences.



Advanced Biomedical Sciences Course

This course consists of the following three sections: Oncology, Regenerative Medicine, and Medical Information in Pathophysiology. It also provides lectures and seminars in basic medicine as well as clinical medicine so that students will be able to acquire both perspectives, which contribute for their future research.

Comprehensive Community Medicine Course

Students learn about cross organs, and develop a comprehensive competency for diagnosis, physical examination skills, and basic techniques for clinical reasoning. This course focuses on statistical methods for epidemiologic ethics and clinical Epidemiology as well as medical education methods to cultivate doctors who are excellent at clinical research and who work for community-based medicine.

University of Fukui Hospital

The University of Fukui Hospital was approved as an "Advanced Treatment Hospital" by Ministry of Health, Labor and Welfare in Japan. It accommodates 600 beds, 28 medical care departments, 4 central medical care facilities, and 12 special medical care facilities, and we conduct research and provide advanced and special medical care to patients.

"da Vinci Si," a surgery assistant robot

"da Vinci Si" is a robot for assisting surgery made in the U.S.A, which has four arms with forceps and electric surgical knives and which can be remotely controlled. It enables surgeons to operate on even a small tumor produced in the abdominal area. Moreover, an endoscope is attached to each arm, which enables surgeons to manipulate the robot by using a controller and a foot pedal while viewing a clear and enlarged 3D image of surgical fields displayed on a monitor.



International Medical Cooperation

Russian patients have visited our hospital to take medical treatment. Some patients had surgical treatment in the Departments of Otorhinolaryngology-Head/Neck Surgery and Neurosurgery in the past. Furthermore, the "da Vinci Si" robotic surgery was first applied to an overseas patient in Department of Urology in February, 2015.

Biomedical Imaging Research Center

The center aims to promote basic and clinical research for diagnosis and prevention of diseases by visualizing molecular signals reflecting functional changes brought by illness, which contributes to health in the local community. The newly developed methods of medical imaging based on this concept will play an important role in the establishment of new scientific fields.





Japanese Language Program

The University of Fukui offers five levels of Japanese language courses from beginner to advanced. Students take a placement test, and are then placed in a course that suits their level. Japanese 1 to 3 are structured with classes according to different skills; writing, reading, kanji, conversation; thus students can take classes for the skills they need to improve as necessary. An outline of the Japanese Language Program is shown in the diagram below. Each course lasts for four months, and students move to the next level once they pass the prior course. Students in Japanese 4 to 5 can attend lectures in the Japanese affairs & culture and multicultural communication in addition to Japanese language, and they can also take Applied Japanese to learn how to practically use what they have learned in the Japanese language courses.

Name of course	Class per week									
Japanese 1	Grammar	Grammar	Grammar	Grammar	Writing	Reading	Kanji	Conversation		
Japanese 2	Grammar	Grammar	Grammar	Grammar	Writing	Reading	Kanji	Conversation		
Japanese 3	General	General	General	General	Writing	Reading	Applied Japanese , Japanese Affairs , Japanese Culture Multicultural Communication + Specialized subjects from each School			
Japanese 4	Reading Writing	Listening Speaking								
Japanese 5	Reading Writing	Listening Speaking								



Japanese 1

This course is aimed at beginner level students (equivalent to CEFR A1). There are four grammar classes per week, and students can also take classes in writing, reading, kanji and conversation as necessary. Students taking this course can learn the very basic skills necessary for daily life. Specifically, they will learn skills such as the following:

- Reading: To be able to read short, simple pieces of information necessary for daily life.
- Listening: To be able to understand what another person is saying if they speak slowly and if it is a short and simple explanation.
- Writing: To be able to write simple sentences and simple letters about themselves.
- Speaking: To be able to say simple sentences about themselves, others, or places.
- Interactive activities: To be able to have basic conversational exchanges necessary in daily life.
- ◇ Textbook: 'Minna no Nihongo Shokyu I, 2nd edition' issued by 3A Corporation

Japanese 2

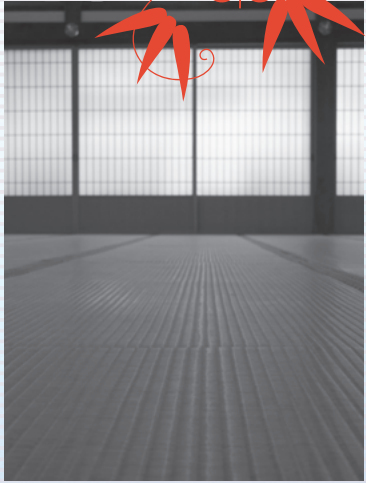
This course is aimed at lower intermediate level students (equivalent to CEFR A2). There are four grammar classes per week, and students can also take classes in writing, reading, kanji and conversation as necessary. Students taking this course will be able to gather information relating to their life and to tell a little bit more detail about themselves. Specifically, they will learn skills such as the following:

- Reading: To be able to obtain simple documents and information sources on matters necessary for daily life and university life, and to understand their content.
- Listening: To be able to understand slow and clear utterances and discussions. Students will also be able to hear and understand short, clear, simple messages and announcements.
- Writing: To be able to write in more detail and to write longer sentences about a variety of matters relating to themselves.
- Speaking: To be able to make speeches or presentations about matters relating to themselves, and to be able to answer simple questions about their speech/presentation.
- Interactive activities: To be able to have simple exchanges in daily life, and also to be able to make requests, ask for advice, make suggestions and apologize. To be able to participate in simple discussions and Q&A, and to express their opinion.
- ◇ Textbook: 'Minna no Nihongo Shokyu II, 2nd edition ' issued by 3A Corporation

Japanese 3

This course is aimed at intermediate level students (equivalent to CEFR B1). Four times a week there are general classes on grammar, listening and conversation, etc., and students who want to learn more can also take classes in writing and reading. Students taking this course will be able to handle, to a certain extent, situations encountered in daily life in Japanese. Specifically, they will learn skills such as the following:

- Reading: To be able to read longer texts and grasp the main point and conclusion of the text as well as gather information.
- Listening: In very familiar situations such as at school or in leisure time, to be able to understand the main point of something if it is spoken in clear, standard Japanese, and to understand simple factual information.
- Writing: To be able to write detailed, cohesive sentences on topics that are familiar and interesting to themselves. In addition, to be able to give a general overview of information based on fact.
- Speaking: To be able to say simple speeches or make presentations of a certain length fairly fluently, about something that interests themselves.
- Interactive activities: To be able to contribute to conversations on familiar topics without preparation, and to be able to express individual opinions, exchange information and speak confidently about familiar matters of individual interest or topics relating to daily life.
- ◇ Textbook: 'Minna no Nihongo Chukyu I' issued by 3A Corporation





若葉の香りが
さわやかな毎日ですが
その後いかが
お過ごしでしょうか

Japanese 4

This course is aimed at upper intermediate level students (equivalent to CEFR B2). It is made up of reading and writing classes as well as listening and speaking classes. Students taking this course will become able to communicate smoothly in Japanese, but also learn the basics for academic skills. Specifically, they will learn skills such as the following:

- Reading: To be able to select appropriate reference material, and to be able to read independently to a certain extent, while changing reading speed and techniques to match the purpose and type of text.
- Listening: To be able to understand long conversations or complex discussions, if the topic is relatively familiar and the direction of the conversation is explicitly shown with some kind of sign. To be able to understand the main point of discussions that are both complex in content and language, on either abstract or concrete topics, including technical discussions on one's specialist field, if standard Japanese is spoken.
- Writing: After summarizing and assessing various information and arguments, to be able to write clear, detailed texts about a range of topics in one's specialized field that are of interest.
- Speaking: To be able to make clear, detailed speeches or presentations on a breadth of topics related to a field of interest. To be able to talk about particulars and relevant case examples, and to strengthen and develop one's claims.
- Interactive activities: To be able to have a fluent, natural conversation with a native speaker without either party feeling stressed, to a point where a normal conversation and relationship is maintained. To be able to express important personal events and experiences, with relevant explanations and reasoning, with a clear explanation of one's opinion.
- ◇ Textbook: 'Academic Writing for International Students' issued by The Japan Times 'Academic Japanese Listening Comprehension for International Students - Lower Intermediate' issued by 3A Corporation, and other textbooks.

Japanese 5

This course is aimed at advanced level students (equivalent to CEFR B2-C1). It is made up of reading and writing classes as well as listening and speaking classes. Students taking this course will gain a foundation in the academic skills necessary for participating in Japanese lectures and seminars. Specifically, they will learn skills such as the following.

- Reading: To be able to have a detailed understanding of long and complex texts regardless of one's field of study through repetitive reading.
- Listening: To be able to understand topics spoken in standard Japanese normally encountered between people, in society and in the academic world, whether it is taken place in real life or broadcast content, even if it is not a familiar topic.
- Writing: To be able to write clear texts with proper construction about complex topics. To be able to emphasize the relevant important points, add supporting information, reasoning and other relevant details, and to develop and maintain the point in question. Finally, to finish with an appropriate conclusion.
- Speaking: To be able to make speeches and presentations in a clear and structured way without losing the main point. To be able to supplement the content with relevant detailed information without losing the main point.
- Interactive activities: To be able to fluently, accurately and effectively use words and be clear about the connection between different thoughts, on a range of topics from general, academic and work-related to leisure-related topics. To show no hint of not being able to express one's thoughts and to naturally communicate with correct grammar and language that is appropriately polite.
- ◇ Textbook: 'Learning Critical Reading through Collaboration' issued by Hituzi Syobo Publishing 'Written Expression and Oral Presentations for University Students: a Practice Book ' issued by Kokushokankokai Inc, and other textbooks

Japanese Language Courses

Name of course	Level	Course content	Classes / week	Hours / semester	Credits	Remarks
Japanese 1	Beginner	Grammar	4	60	4	For students in the A program
		Writing	1	15	1	
		Reading	1	15	1	
		Conversation	1	15	1	
		Kanji	1	15	1	
Japanese 2	Lower Intermediate	Grammar	4	60	4	For students in the A program
		Writing	1	15	1	
		Reading	1	15	1	
		Conversation	1	15	1	
		Kanji	1	15	1	
Japanese 3	Intermediate	General	4	60	4	For students in the A program
		Writing	1	15	1	
		Reading	1	15	1	
Japanese 4	Upper Intermediate	Reading / Writing	1	15	1	
		Listening / Conversation	1	15	1	
Japanese 5	Advanced	Reading / Writing	1	15	1	
		Listening / Conversation	1	15	1	



Japanese Culture / Japanese Affairs Course

《 Spring Semester 》

Name of course	Level	Classes / week	Credits	Remarks
Japanese Affairs	Upper Intermediate - Advanced	1	2	
Japanese Culture		1	2	
Multicultural Communication 2		1	2	Joint Classes with Japanese students
Multicultural Communication 3		1	2	Joint Classes with Japanese students
Applied Japanese 2		1	2	

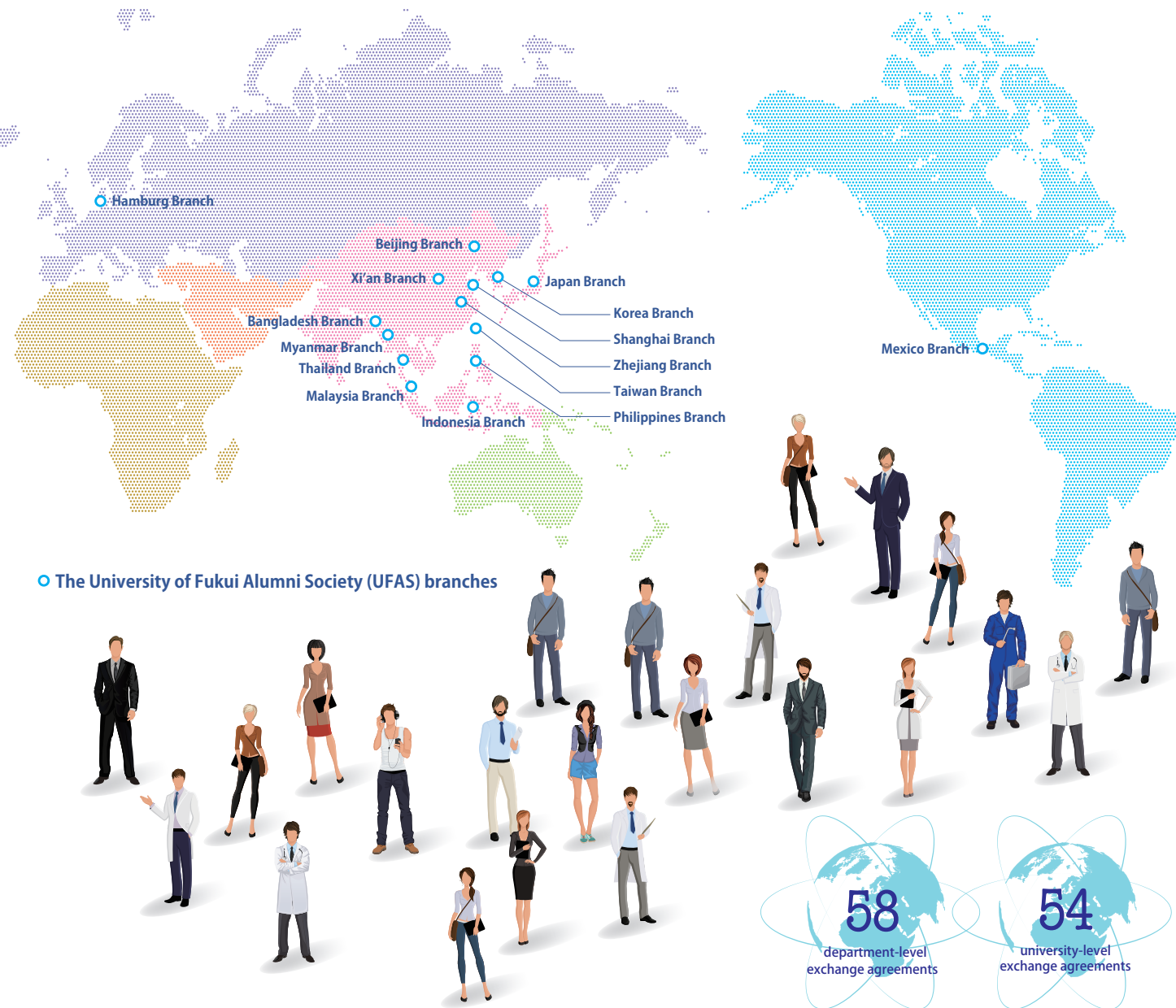
《 Fall Semester 》

Name of course	Level	Classes / week	Credits	Remarks
Japanese Affairs	Upper Intermediate - Advanced	1	2	
Multicultural Communication 1		1	2	Joint Classes with Japanese students
Applied Japanese 1		1	2	

夏空のまぶしい季節と
なごみ

International Network

The University of Fukui has committed to internationalization of the university and global education. We have expanded its international network and strengthened partnerships with universities. Its collaborations within the international network ranges from student exchange, faculty-led study abroad, faculty exchange to joint research and project, internship, and so on. As of March 2017, we have 112 partner institutions in 31 countries and regions, as well as 15 UF Alumni Society branches in 12 countries. We promote and support diversity, and will create a truly multicultural campus in the years to come.



Oceania

Australia

University of Sydney, School of Physics
Deakin University
Southern Cross University, SCU College

New Zealand

The University of Waikato, Waikato Pathways College

Middle & Near East

Turkey

Ondokuz Mayıs University, Faculty of Medicine

UAE

Ittihad University

Africa

Uganda

Makerere University, Faculty of Medicine

The University of Fukui Partner Universities and Institutions

● University names in blue letters: university-level exchange agreement

● University names in black letters: department level exchange agreement

Asia

China

Xi'an International Studies University
Xi'an University of Technology
Zhejiang University
Beijing Information Science & Technology University
Zhejiang Sci-Tech University
Nanchang Hangkong University
Jiangnan University
Soochow University
Donghua University
Shenyang Normal University
Tianjin University of Science and Technology
Wuhan University of Science and Technology
University of Shanghai for Science and Technology
Lanzhou Jiaotong University, School of Mechatronic Engineering
Xi'an Jiaotong University, School of Nuclear Science & Technology
Shaoxing People's Hospital
Lanzhou Jiaotong University, School of Electronic & Information Engineering/Automatization & Electric Engineering
Tianjin Polytechnic University
Inner Mongolia University of Technology
University of Electronic Science and Technology of China, The Institute of Plasma Physics
Southeast University, Department of Power Engineering
Shanghai Normal University

Macau

University of Macau

Korea

Dong-A University
Yeungnam University
Hanyang University
Yonsei University, College of Engineering
Pukyong National University, The College of Engineering
Pusan National University, The College of Education
Sungkyunkwan University, College of Engineering
Seoul National University, Center for THz-Bio Application Systems

Mongolia

Mongolian University of Science and Technology

Taiwan

National Yunlin University of Science and Technology
Fu Jen Catholic University
Kainan University
National Taiwan University of Science and Technology
National Tsing Hua University, College of Engineering
National Tsing Hua University, Tsing Hua Optoelectronics Research Interdisciplinary Center

Thailand

King Mongkut's University of Technology Thonburi
Sripatum University
Assumption University
Kasetsart University
Central Chest Institute of Thailand
Rajamangala University of Technology Isan, Faculty of Engineering and Architecture
Thammasat University, Institute of East Asian Studies
Chandrasakorn Rajabhat University, Faculty of Humanities and Social Sciences
College of Asian Scholars
Srinakharinwirot University, Faculty of Engineering
Chulalongkorn University, Faculty of Arts

Indonesia

University of Indonesia
Syiah Kuala University
Universitas Halu Oleo
Diponegoro University, Faculty of Science and Mathematics
Universitas Airlangga, Faculty of Medicine
Ministry of Research, Technology, and Higher Education of the Republic of Indonesia (RISTEKDIKTI)

Philippines

University of the Philippines, National Institute of Physics
De La Salle University, College of Science

Vietnam

Vietnam International Education Development of the Ministry of Education and Training
Electric Power University
The University of Danang
Ho Chi Minh City University of Education
University of Social Sciences and Humanities, Vietnam National University Ho Chi Minh City
Ho Chi Minh City University of Foreign Languages and Information Technology
VNU University of Social Sciences and Humanities, Hanoi
VNU University of Language and International Studies
Central Electric Power College

Malaysia

University of Malaya
Universiti Sains Malaysia

India

National Institute of Miners' Health

Bangladesh

Khulna University of Engineering & Technology

Cambodia

Royal University of Phnom Penh
BELTEI International University

America

United States of America

Rutgers University
Clemson University
The University of Findlay
Washington University Medical Center,
Mallinckrodt Institute of Radiology
Portland State University

Canada

University of Ottawa, Faculty of Medicine

Mexico

Universidad La Salle Mexico

Peru

San Marcos National University, Faculty of Geological, Mining, Metallurgical and Geographical Engineering (FEGMMG)

Europe

Germany

University of Hamburg, Asia-Africa-Institute, Faculty of Humanities
University of Stuttgart, Institute of Plasma Research
The Institute for Pulsed Power and Microwave Technology of Karlsruhe Research Center

France

Textile and Chemical Institute of Lyon
University of Maine

Italy

University of Naples "L' Orientale"

Russia

Russian Academy of Sciences, Institute of Applied Physics
D.V. Efremov Institute of Electrophysical Apparatus, the Scientific-Technical Center of Microtechnologies
Russian Academy of Sciences, Siberian Branch, Institute of Physics
Russian Academy of Medical Sciences, Siberian Branch, State Establishment Scientific Center of Reconstructive and Restorative Surgery,
Russian Academy of Sciences, Kazan Scientific Centre
Irkutsk State Medical University

Latvia

University of Latvia, Institute of Solid State Physics

Lithuania

Lithuanian University of Educational Sciences
Vytautas Magnus University

Poland

Warsaw University of Technology, Faculty of Chemical and Process Engineering

Bulgaria

The Bulgarian Academy of Science, Institute of Electronics

Romania

University of Bucharest
Babeş-Bolyai University
Romanian-American University

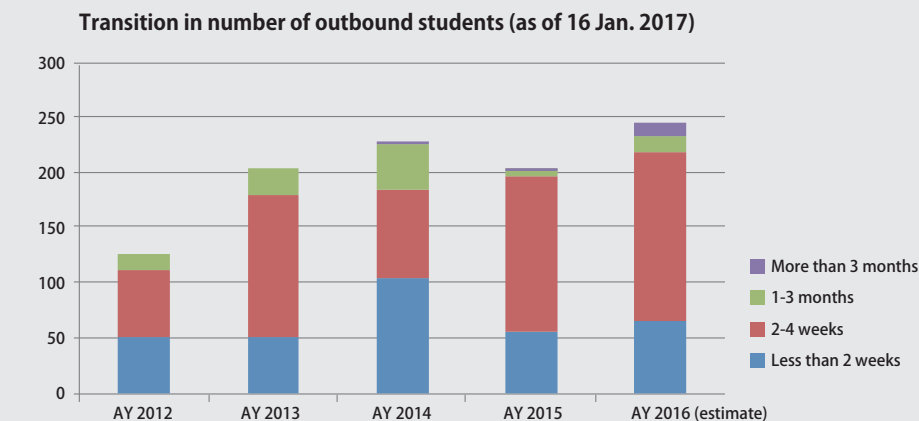
Others

CONSORTIUM

University Mobility in Asia and the Pacific (UMAP)
Consortium (European Nuclear Education Network Association/ Institute for Nuclear Sciences and Technologies/ Faculty of Power Engineering, University Politehnica Bucharest / Center for Nuclear Research)

Global Outreach Outbound

At the University of Fukui, we encourage active international exchange and international-level education and research. Through disseminating our world-class progress and achievement, we aim to nurture individuals to be highly specialized professionals who can contribute to the region's internationalization and the creation of a diverse society. To achieve this goal, we offer comprehensive opportunities for overseas study, and enable students to advance in foreign language skills and also to gain international experiences all over the world.



The number of students sent overseas is trending upwards each year. In particular since 2012, as a result of the organization and development of the short-term overseas training program aiming to promote overseas study, the number has grown significantly. The ratio of students studying overseas per School and year almost matches the proportions of enrolled students in those Schools and years. As of 2016, short-term overseas students made up the majority of the students who studied overseas, however, with the significant increase in partner universities having academic exchange agreements, from 2017 onwards it is expected that the number of studyabroad students for one or two semesters will grow significantly.

Short-term Programs

We hold 'Short-term Overseas Training Programs' of one week to three months in length, with overseas educational institutions with which we either have an academic exchange agreement, or with which individual consent has been given. In order for students to participate in a program that best suits them at the best time, and that suits them in terms of the purpose of the exchange, their interests, foreign language learning and specialist area learning and future plans, there are a variety of programs classified and structured into six types according to level and content.

0. Language Learning type 1. Cultural Experiences & Exchange type 2. Global Generic Skills type
3. Academic Expertise type 4. Practicum & Internship type 5. Research & Publications type

Short-term Overseas Training Program Types

	Classification (Focused skills & experiences)	Main training contents and purpose	Target year group (standard)
0	Language Learning	Training to improve language ability	All years
1	Cultural Experiences & Exchange	Through visiting cultural and historical sites, cultural experiences and exchanges with local people, students become accustomed to and deepen their understanding of the global environment	Undergraduate 1st and 2nd years
2	Generic Skills & Expertise	Nurture the education of global talent through participation in lectures and field work regards a particular region's society and culture	Undergraduate 2nd to 4th years
3		Deepen understanding of a field of study through participation in lectures and experiments and visits to companies of related fields	
4	Practicum & Research	Practicum & Internship	Undergraduate 4th year to 2nd year of Master's
5		Research & Publications	

Number of participants and Short-term Overseas Training Programs in AY 2015

19 countries/regions (as of 16 Jan. 2017)

	Destination country	No. of students	No. of programs
1	Thailand	57	5
2	USA	50	10
3	China	28	3
4	Australia	22	4
5	Germany	11	5
6	New Zealand	9	1
7	Malaysia	8	4
8	UK	8	1
9	Taiwan	6	2
10	South Korea	5	4
11	Turkey	3	1
12	India	2	1
13	Austria	1	2
14	Netherlands	1	1
15	Croatia	1	1
16	Philippines	1	1
17	Belgium	1	1
18	France	1	1
19	Canada/Uganda	1	1
	Total	216	49

Short-term Overseas Training Programs Experiences

0. Language Learning type

Destination : The University of Waikato (New Zealand)
Program Period : 3 weeks



I took part in a language study program overseas using the summer holiday period. The purpose of my overseas study was to put myself into an English-only environment so that I would have to take the initiative to communicate. While in New Zealand I felt that I became able to initiate conversations in English, such as through enjoying conversations with people on the street when I needed directions for a shop, and having conversations with my host mother about our respective cultures.

1. Cultural Experiences & Exchange type

Destination : Pukyong National University (South Korea)
Program Period : 1 week



I participated in a short-term program at Pukyong National University in South Korea for eight days over the summer holiday period. I decided to take part because I had always wanted to experience South Korean culture. During my stay, I learnt the importance of knowing about other cultures, and it helped with my current studies. I would like to utilize my experiences to try new things in the future.

2. Global Generic Skills type

Destination : Thammasat University (Thailand)
Program Period : 2 weeks



I took part in the Thammasat University overseas study program because I thought that diverse thinking will be necessary for our global society of the future. In Thailand, there were lots of students with novel ideas, and my previous 'black and white' style of thinking all at once became more 'colorful'. I achieved my goals during the program and I am proud of myself for the fact that I created a good relationship with the students of Thammasat University.

Long-term Programs

Through living overseas for a relatively long period of generally three months or more, students can improve their language ability on an intensive basis and have a variety of experiences such as highly specialized study and interactions with local students and overseas students from various countries. A variety of long-term studyabroad opportunities are offered at the University of Fukui.

Exchange Programs

The University of Fukui assigns exchange students for a period of six months to one year, to universities with an academic exchange agreements. The students who have been chosen as exchange students to our partner universities use their time prior to departure to be tutors for the exchange students from overseas and support them in their life in Japan. This interaction gives them a chance to come into contact with the language and culture of their exchange destination. We are currently making an effort to increase the number of partner universities, and we plan to extend the options for study destinations around the world.

UMAP Exchange Programs

Given that the University of Fukui is a member of University Mobility in Asia and the Pacific (UMAP), students can choose a study destination from UMAP member universities for placements of six months to one year. This provides students with broader overseas study opportunities because they are able to study at universities that do not have an academic exchange agreement directly with the university. Even though many of the UMAP members are universities in non-English speaking regions, they often have a number of English subjects available.

Exchange Programs Experiences

Destination : University of Findlay (USA)
Program Period : August 2016 to May 2017
Exchange Student : Fumiho Kondo
Student of the Faculty of Education and Regional Studies, Primary Education Course, Fourth Year (at time of start of exchange)



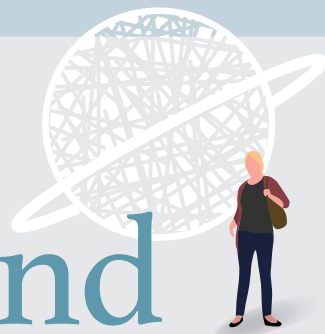
I decided to go on exchange to the University of Findlay with the future goal of becoming a senior high school English teacher with native-level English and a broad outlook. I have opportunities to introduce people to Japanese culture both inside and outside the university, and I put particular effort into this. For example, in the 'Japan Festival', I was a principal project member, which was a great experience in helping students of the University of Findlay to enjoy Japanese food and arts.

Destination : Dong-A University (South Korea),
Program Period : March 2016 to February 2017
Exchange Student : Ayako Fukushima
Student of : Graduate School of Education - Second year Master's student (at time of start of exchange)



My main reason for going on exchange was to learn Korean. I mainly took classes held in the Language Hall (the university's Language School), however I felt that life in Korea using Korean was also part of my learning. I was also able to learn about world cultures, including Korean culture, of course, but also other cultures from my interactions with exchange students from other countries, and I was able to broaden my horizons.

Inbound



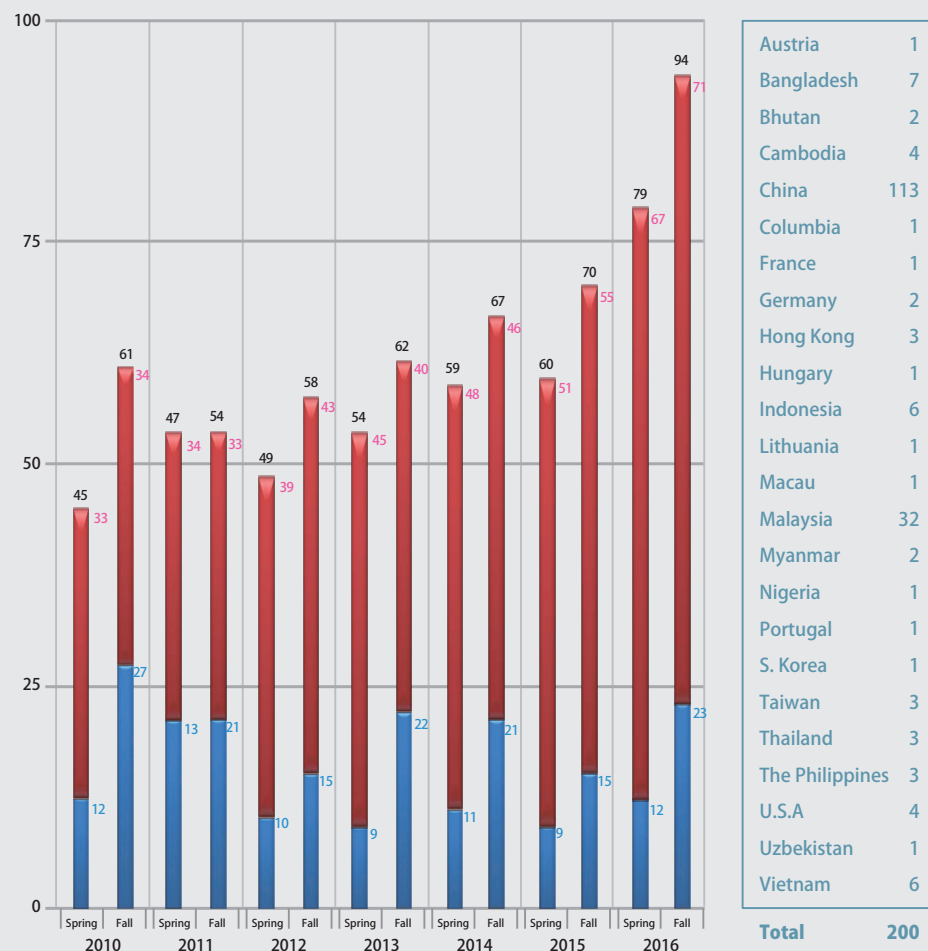
The University of Fukui is active in accepting international students, with the aim of becoming a university with a high degree of internationality that is open to the world.

The University of Fukui has promoted international education and has strived to create a multicultural environment as a means to cultivate global human resources who will play an active role in local and community development and will contribute to the happiness of all human kind.

There were 258 international students from 24 countries and regions enrolled at UF, with 188 enrolled in the Spring of 2016 and 200 in the Fall of 2016. These numbers reflect an increase of about 9 percent in the Spring and about a 14 percent increase in the Fall compared with the year of 2015.

This chart illustrates a unique trend which is that the number of exchange students and research students who study at our university for one or two semesters increased in 2016. This is because we will increase the number of outbound exchange students to study at our partner institutions for one or two semesters in the academic year 2017-2018.

The University of Fukui sees diversity as core to its identity and maintains as one of its goals for the campus community to be one in which all cultures meet. Thus, UF will continue to increase the number of international students and diversify the student body to establish an international campus where students of different cultures can exchange ideas, grow as social beings, and study the most up to date sciences and technologies, preparing them to be successful in today's globalizing societies.



Austria	1
Bangladesh	7
Bhutan	2
Cambodia	4
China	113
Columbia	1
France	1
Germany	2
Hong Kong	3
Hungary	1
Indonesia	6
Lithuania	1
Macau	1
Malaysia	32
Myanmar	2
Nigeria	1
Portugal	1
S. Korea	1
Taiwan	3
Thailand	3
The Philippines	3
U.S.A	4
Uzbekistan	1
Vietnam	6
Total	200

Number of Non-degree Seeking Students

Fall 2016 Distribution of Inbound Students by Countries



Programs

The University of Fukui offers a variety of programs for international students. By diversifying acceptance programs, even more students can be offered opportunities for study.

International Student Exchange Program between Diverse Research Fields (2 weeks)

In this program, participants are chosen from among students in chemistry- or biology-related departments or majors, mainly from our partner universities in China, Taiwan, Malaysia and Vietnam, etc. In the research labs where they are accepted, the students participate in actual research and experiments on technology that is unfamiliar to them in their specialized field. By conducting reciprocal research exchanges from the approach of a different research area, students not only extend their specialized fields but gain an overview of multiple research topics from a broad viewpoint and an international perspective. The program aims to nurture students who can find solutions to issues in actual society and be even more practical, global individuals.

Student Exchange Programs (6 or 12 months)

University of Fukui Student Exchange Program (the name has changed in April 2017) accepts international students for a period of 6 months or 12 months while they are registered as regular students at one of the universities that have student exchange agreements with the University of Fukui. At the University of Fukui, the students will study and earn credits or will receive instruction and guidance on research in order to pursue their specialized fields and to deepen their understanding about Japan.

(See pp. 25-26 for more details)

Many exchange students who complete this program go on to become degree-seeking students in the Graduate School of the University of Fukui.

Year of Acceptance as Exchange Student	2009	2010	2011	2012	2013	2014	2015
Percentage being admitted to the Graduate School after completing our Exchange Program	31.6%	43.5%	58.8%	50.0%	36.4%	65.0%	39.1% (Estimate)

UMAP Exchange Programs (6 or 12 months)

The University of Fukui is a member of University Mobility in Asia and the Pacific. UMAP is a consortium for the promotion of student and teaching staff exchange between higher education institutions in the Asia-Pacific region, and students of UMAP universities are able to go on study exchange with member universities in other countries. Students at universities that do not have an academic exchange agreement with the University of Fukui can embark on overseas study at the University of Fukui.

MJHEP (Malaysia Japan Higher Education Program)

MJHEP is a study overseas system funded by the Malaysian government which began for the purpose of nurturing individuals in ever-developing Malaysia. To date, the University of Fukui has accepted MJHEP students in the Department of Electrical, Electronic and Computer Engineering and the Department of Mechanical and System Engineering. Many of these students proceed to the Graduate School of Engineering at the University of Fukui after obtaining a bachelor's degree in order to deepen study in their specialized fields.

ABE Initiative & JDS

The ABE Initiative is a program initiated by JICA for the purpose of educating individuals to contribute to industrial development in Africa and to educate pilots for business development of Japanese companies in Africa. In the Japan Aid for Human Resource Development Scholarship (JDS) project, young government administrators in the target countries who deal with the development and implementation of social / economic development plans are accepted as international students, with the aim of educating leaders in that country and contributing to the expansion and intensification of the basis for friendly relations between the two countries. To date, the University of Fukui has accepted JICA trainee international students into the Graduate School of Engineering, and they are being provided with research guidance to obtain their Master's Degrees.

Data :

2014 Year: 3 students (Tanzania, Kenya, Ethiopia)
2015 Year: 2 students (Myanmar)
2016 Year: 1 student (Nigeria)



Student Exchange Programs

Students from our partner universities can study at the University of Fukui as exchange students for 6 months or 12 months. We have 2 student exchange programs, A and B, as follows

Program Outline	Study in English Program A	Study in Japanese Program B
	<p>This program is for students who have English language proficiency and take courses or receive research instruction in English. Japanese language courses are available in 5 levels from beginner to advanced.</p> <p>Undergraduate students</p> <p>Take Common Courses (Japanese Language and Japanese Affairs), and Specialized Courses specially offered for Program A students. There is also a year-round "Special Research" course in which students receive research guidance from their supervisors to complete their graduation thesis. In addition, GCS courses will also be available. See Course List for Program A 2017-2018 on p. 30 for details. Students who also meet the language requirement for program B can take regular courses offered in Japanese.</p> <p>Graduate students</p> <p>Receive research instruction in the fields of education or engineering in English. No credit given.</p>	<p>Program B is a program for students who have high Japanese language proficiency. Japanese language courses are available in 2 levels, intermediate and advanced.</p> <p>Undergraduate students</p> <p>Take regular courses offered by School of Education, Engineering or GCS*, and Common Education (liberal arts) courses offered in Japanese. Students in Program B register 10-class hours/week per semester. For course details, please see the syllabus on the UF website. https://syllabus1.sao.u-fukui.ac.jp</p> <p>Graduate students</p> <p>➡ Auditing Student Take regular master's courses offered by Graduate School of Education or Engineering.</p> <p>➡ Research Student Enroll as a Research Student and conduct research without taking courses. Research Students cannot earn credit.</p>
Admission	April & October	
Program term	6 months / 1 year	
Language requirement	TOEFL PBT 500 / iBT 61 or its equivalent	Level N2 or above of Japanese Language Proficiency Test

*GCS: School of Global and Community Studies

Application deadline	April Admission End of April (subject to change)
	October Admission End of October (subject to change)

《 Program Revision 》

- The name of the program was changed in April 2017.
- April admission for program A (formerly named A. UFSEP), and 6 months' duration of this program as an acceptance period was added.

JASSO Scholarship Opportunity

The Japan Student Services Organization (JASSO) scholarship may be available if the programs are granted. The amount of the scholarship is 80,000 yen/month (subject to change).

Accommodation

There are two university dormitories for the above program students. Please see p. 34 for details. The dormitory rooms are preferentially assigned to exchange students. However, due to the limited number of rooms, there is no guarantee that a room will be provided for all students wishing to live in a dormitory.

Tuition Waiver

Students from partner universities will be exempted from paying both a matriculation fee and tuition at the University of Fukui under the student exchange agreement. The exemption is, however, limited to the number of students stated in the agreement. Students who are accepted outside of the agreement will be exempted from paying a matriculation fee, but must pay tuition as follows :

Student Status at UF	Tuition	Example
Special Auditing Student with credit (Undergraduate Student & Graduate Student)	14,800 JPY x Total credits registered	For a student who registers 7 courses, each 2 credits, in one semester: 14 credits x 14,800 = 207,200 JPY/semester
Special Research Student with no credit (Only Graduate Student)	163,800 JPY x Total semesters enrolled	For a student who receives research instruction for two semesters: 2 semesters x 163,800 = 327,600 JPY

Course List for Program A

SPECIALIZED COURSE GROUP - Taught in English

《 Culture and Society field 》

F British and American Literature II
F Comprehensive English Communication 1
F Comprehensive English Communication 2
F German-Japanese Translation 2
F British and American Literature I
F British and American Literature III
F German-Japanese Translation 1
Y Special Research on Culture and Society

《 Architecture and Civil Engineering field 》

F Regional Planning
F Transportation Planning
F Structural Mechanics I and Exercise
S Residential Environment Planning
S Architectural Environmental Engineering
S Structural Mechanics II and Exercise
S Earthquake Engineering
Y Special Research on Architecture and Civil Engineering

《 Materials Science and Biotechnology field 》

F Inorganic Materials Chemistry
F Kinetics of Radical Polymerization in Dispersed Media
F Introduction to Polymer Reaction Engineering
F Polymer Structure
F Polymer Science
F Fiber and Polymer Processing
F Principles of Instrumental Analysis
F Applied Microbiology-Research for Undergraduates
S Total Synthesis of Natural Products
S College Biochemistry
S Bioengineering
Y Special Research on Materials Science and Biotechnology

《 Mechanical and System Engineering field 》

F Control, Systems Engineering and Mechatronics
F Strength of Materials
F Fluid Engineering
S Engineering Material and Design
S Thermal and Energy Engineering
S Dynamics in Engineering
F Advanced C Programming Exercise
S Control Engineering
S Science and Culture of "Budo"
S Neural Signaling
S Science of Form
F Introduction to Nuclear Engineering I (Principles)
S Introduction to Nuclear Engineering II (Application and Safety)
Y Special Research on Mechanical and System Engineering

《 Electrical, Electronic and Computer Engineering field 》

F Physics of Semiconductor Devices
F Introduction to Cryptology
F Vector Analysis
F Lasers and Their Applications
F System Program
F Introduction to Information Theory
S Condensed Matter Physics
S Neural Network
S Signal Processing
S Analog Electronic Circuits
S Quantum Mechanics, Quantum Computation and Quantum Cryptography
Y Special Research on Materials Science and Biotechnology

《 Applied Physics field 》

F Physics of Magnetism
S Applied Mathematics
Y Special Research on Applied Physics

《 Global and Community Studies 》

Courses taught in English at the School of Global and Community Studies will be offered to exchange students. (Please see P.12 for course details)

COMMON COURSE GROUP - Taught in Japanese

Course name		Level	Textbook	Class week	Credit
F/S	Japanese 1	Beginner	Minna no Nihongo Elementary Japanese I	4	4
F/S	Japanese 2	Lower Intermediate	Minna no Nihongo Elementary Japanese II	4	4
F/S	Japanese 3	Intermediate	Minna no Nihongo Intermediate Level	4	4
F/S	Japanese 4	Upper Intermediate	Based on each skill class	2	2
F/S	Japanese 5	Advanced	Based on each skill class	2	2
F/S	Kanji 1	Beginner	Minna no Nihongo Kanji 1 (first half)	1	1
F/S	Composition 1	Beginner		1	1
F/S	Conversation 1	Beginner		1	1
F/S	Kanji 2	Lower Intermediate	Minna no Nihongo Kanji 1 (second half)	1	1
F/S	Composition 2	Lower Intermediate		1	1
F/S	Conversation 2	Lower Intermediate		1	1
F/S	Reading 2	Lower Intermediate		1	1
F	Japanese Affairs 1	Upper Intermediate and Advanced		2	2
S	Japanese Affairs 2	Upper Intermediate and Advanced		2	2
S	Japanese Culture	Upper Intermediate and Advanced		1	2
F	Applied Japanese 1	Advanced		1	2
S	Applied Japanese 2	Advanced		1	2
F	Multicultural Communication 1	Upper Intermediate and Advanced		1	2
S	Multicultural Communication 2	Upper Intermediate and Advanced		1	2
S	Multicultural Communication 3	Upper Intermediate and Advanced		1	2

F: Offered in fall semester S: Offered in spring semester Y: Year-round course (fall - spring)



Fukui International Association: <https://www.f-i-a.or.jp/en/>
 Fukui Citizens International Association <http://fcia.jp/>
 Fukui City Volunteer Center: <http://fukui-vc.jp/>
 Sabae Rotary Club: <http://sabaerotary.com/>



● Japanese Martial Arts Experience Japanese archery, 'Kyudo' experience. / Fukui Citizens International Association



● Bookcase making Making a connectable bookcase as volunteers. / Fukui City Volunteer Centre



● University of Fukui Festival Students can experience planning an event and running food stalls. / University of Fukui



● Home country introduction Introducing games from one's home country and interacting with children. / Fukui Citizens International Association



● Japanese instrument experience Japanese instrumental performance using traditional instruments. / Fukui International Association



● International exchange in Our Village Cooking experience with local people. / Yoshino Community Center, Eiheiji Town



● International Sports Exchange Mini Sports Day where anyone can participate regardless of nationality. / Fukui Citizens International Association



● Cooking World Tour Making cuisine from around the world with local people. / Fukui Citizens International Association



● 'Noh' Play Performance Watching a 'Noh' Play - a traditional Japanese cultural theater art. / Fukui Citizens International Association



● Hello World Introducing one's country to junior high school students in the area. / Fukui Citizens International Association

楽



● Japanese exchange conversation class "Shaberiba" Learning about Japanese culture and reading, writing, listening, speaking on various topics while enjoying interaction with others. / Fukui Citizens International Association



● Multicultural 1-day camping in the forest Students can enjoy making food and playing games from around the world with people from a range of different cultures living in Fukui. / Fukui Citizens International Association

幸



● International round-table discussion 'Let's talk about world peace' A round-table discussion on world peace. / Sabae Rotary Club

Community Outreach

Experience Fukui

International students have many opportunities to participate in on- and off-campus events organized by local international associations, community centers, and high schools. Each one of these activities contributes to increase the interaction between international students and the local community. Here we introduce a few examples.

活

Interaction with Local High School Students

Interaction with Local High School Students

International students of the University of Fukui have opportunities to participate in events organized by Fukui Prefectural high schools, and attend daily classes. These events create an opportunity for interaction of high school students with our international students.

Interaction with Sakai High School students

International students participated in a cultural festival organized by the high school, and got a feel for high school study through traditional cultural experiences and a fashion show. In addition, in their marketing class, as an opportunity to think about tourism policy in Sakai City (Fukui Prefecture), students visited Maruoka Castle and a textile company manufacturing narrow-weave fabric (both tourist sites) to carry out on-site research.



喜



Interaction with Fukui Commercial High School students

International students participated in classes at the high school. In a home economics class, they cooked together with high school students, and in a tourism marketing class they discussed Fukui tourism and created a sightseeing plan with high school students. They used the plan to do actual sightseeing around Fukui Prefecture, thus spending valuable time with the high school students. International students were also invited to the abacus club, and experienced traditional Japanese calculation methods.



Thinking Local with a Global View

In Takasu Town (Fukui City) that is facing an ageing society and depopulation, people from outside the town come and try their hand at rice growing in the rice paddies. With an invitation from the Takasu Joyama Noh to Hito no Kai, international students experienced traditional Japanese agriculture. With local people on hand to help, the students can experience harvesting rice, harvesting soba (buckwheat), making soba noodles and making 'shimenawa' straw festoon.



生



Activities for International Students



Tutors

If it is the first time for an international student to come to Japan or have lived in Japan for less than one year, he/she can be assigned a tutor who provides information and assistance to adjust to life in Japan. Throughout the semester, tutors also provide academic support such as giving guidance on experiments and learning Japanese.

Community Activities

International students have many opportunities to participate in on- and off-campus activities organized by local international associations, community centers, and high schools. Such information is regularly distributed to students via email.

Club Activities

- There are 83 clubs and associations at Bunkyo campus (45 athletic and 38 cultural)
- There are 44 clubs and associations at Matsuoka campus (22 athletic and 22 cultural)



Life in Fukui

Living in Fukui is relatively affordable compared with other parts of Japan. There are many apartments around each campus and most of them are reasonable. If you live in one of the university dormitories, living expenses will be minimal.



Apartment

The University of Fukui supports international students to find reasonable apartments near each campus by providing information of real estate agencies. The following is the approximate cost of making an apartment contract in Fukui city.

- Rent 25,000 to 30,000 JPY / month
- Initial cost about 3-month rent equivalent for deposit and contract fee

Monthly Expenses

- Rent 9,000 JPY
- Utility 4,000 JPY
- Food 30,000 JPY
- Daily products 1,000 JPY
- Mobile phone 2,000 JPY
- Insurance 2,000 JPY
- Other expenses 2,000 JPY

Total : 50,000 JPY



Life in Fukui is really comfortable. The air is fresh, water is clean, and transportation is convenient. The living cost is not so high compared to larger cities in Japan, though cooking ingredients are rather expensive. I also enjoy the space in my dormitory because I don't have to share a room with others like I did in my home university in China. On weekends, I like to take a walk to the Asuwa River or take a train from the nearby station to Mikuni beach area. Fukui is a relaxing and easy city to live in.

Zhang Mingda

Accommodation

Dormitory



Matsuoka Campus

There is a student dormitory on campus.

International House | 16 rooms (single, couple, family)

- Rent (single): monthly 8,400 JPY (incl. communal charge)
- Rent (couple): monthly 13,400 JPY (incl. communal charge)
- Rent (family): monthly 15,700 JPY (incl. communal charge)



Bunkyo Campus

There are 2 dormitories located within a 5-minute walk from the campus. There is a local train station and a supermarket near the dormitories.

UF Student Dormitory | 209 single rooms

Rent: monthly 5,700 JPY (incl. communal charge)

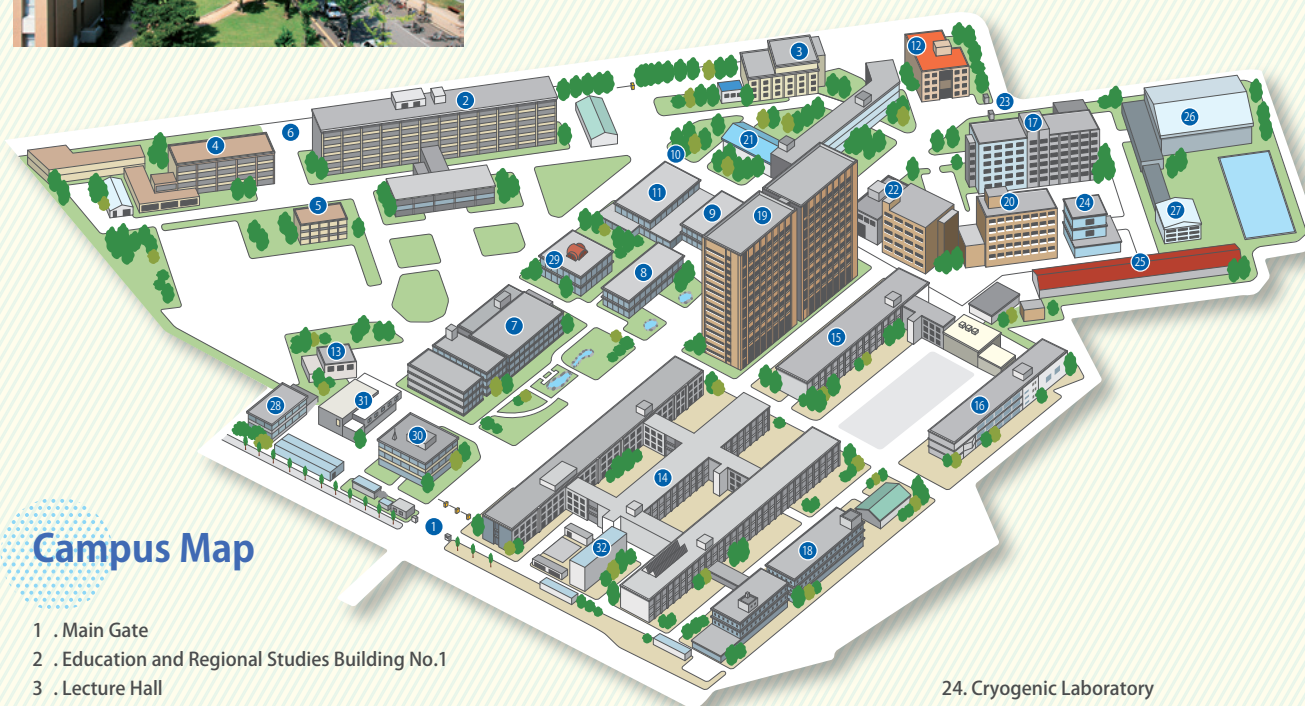
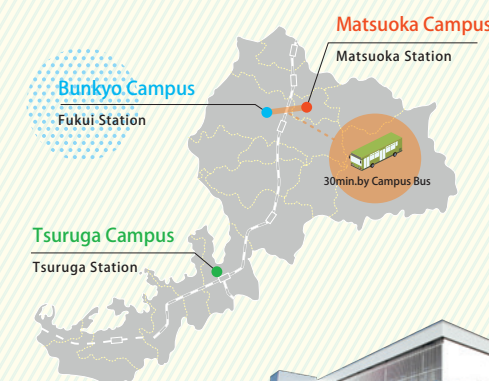
Overseas Student House | 35 rooms (single, couple, family)

- Rent (single): monthly 8,900 JPY (incl. communal charge)
- Rent (couple): monthly 14,900 JPY (incl. communal charge)
- Rent (family): monthly 17,900 JPY (incl. communal charge)

B

Bunkyo Campus

School of Education / School of Engineering /
School of Global and Community Studies



Campus Map

- | | | |
|---|--|--|
| 1 . Main Gate | 15. Engineering Building No.2 | 24. Cryogenic Laboratory |
| 2 . Education and Regional Studies Building No.1 | 16. Laboratory Building | 25. Center for Innovative Research and Creative Leading Education (CIRCLE) |
| 3 . Lecture Hall | 17. Engineering Building No.3 | 26. Gymnasium I |
| 4 . Education and Regional Studies Building No.3 | 18. Engineering Building No.4 | 27. Gymnasium II |
| 5 . Integrated Research Center Educational Practice | 19. Science Tower I | 28. Makishima Guest House |
| 6 . North Gate | 20. Research Center for Development of Far-Infrared Region(FIR FU) | 29. Center for Information Initiative(CII) |
| 7 . University Library / LDC | 21. Admission Center / International Center | 30. Administration Office Building |
| 8 . Student Commons / Language Center/ Global Hub/ International Affairs Division | 22. Headquarters for innovation Society Academia Cooperation Building II | 31. Academy Hall |
| 9 . Food Service and Stores | 23. East Gate | 32. International Center Branch |
| 10. Notice Board | | |
| 11. Student Service Center | | |
| 12. Extracurricular Activities Building | | |
| 13. Health Administration Center | | |
| 14. Engineering Building No.1 | | |

Cafeteria "Ajisai"

University cafeteria provides various kinds of menu at reasonable prices.
open 8:10 a.m. - 7:30 p.m.
(closed on Sundays)



Shops "Manten" + Book Shop "Asuwa"

Bunkyo campus has shops where you can buy ready-to-eat food, snacks, drinks, stationery goods, magazines, etc. to support student life.



Student Support Center

This office deals with inquiries about academic matters, issuance of transcripts and other certificates, and requests for tuition fee exemptions etc.



International Affairs Division

This division provides a wide range of support services to international students. In order for international students to spend their student life smoothly, the division provides post-arrival and pre-departure orientation, as well as support for applications relating to qualifications, scholarships and housing.

Language Center

<Global Hub>

Student Coordinators (SCs), who have studied abroad and international students organize a variety of language and cultural events for students. The Global Hub is a student-managed facility and a place to meet new friends and relax. In addition, the following events are scheduled:

- Lunch event
- Brown bag lunch seminar
- Chat event
- Star Festival event
- Halloween event
- Christmas event
- many more

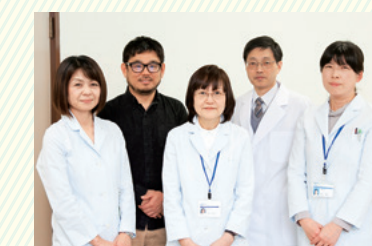


<Language Development Center>

The Language Development Center (LDC) is a state-of-the-art self-access center and is equipped with more than 1000 educational DVDs and more than 2500 books for language study, so that individuals and groups can study foreign languages independently. Japanese language materials are included in the collection of language study resources.

Health Administration Center

Doctors, nurses, public health nurses, and counselors are available to support both mental and physical health of students.



Student Support and Counseling Office

Students can visit the Student Support and Counseling Office for any reasons, from getting lost on campus to personal and academic problems.



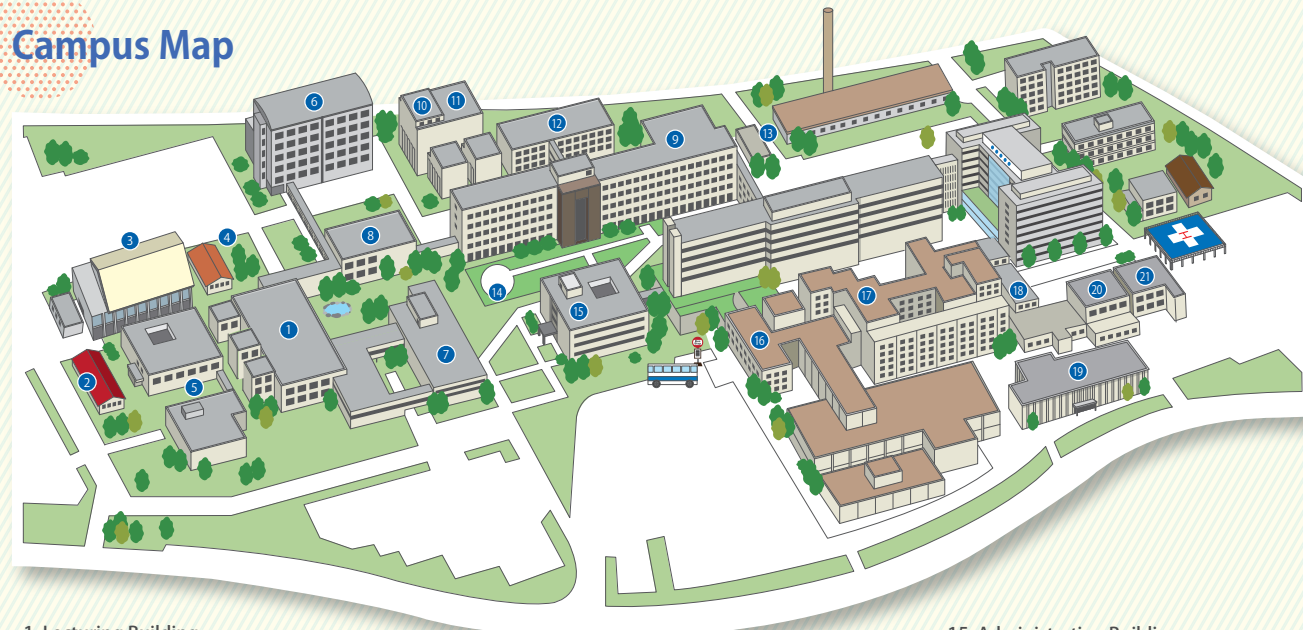
M

Matsuoka Campus

School of Medical Sciences



Campus Map



1. Lecturing Building
(This building received the Good Lighting Award for energy-efficient lighting and comfort. Lectures and seminars are held here.)
2. Martial Arts Hall
3. Gymnasium
4. Archery Range
5. Student Commons / Food Service and Stores
(Students are supported with nutritionally balanced, generously-sized meals.)
6. School of Nursing Building
(School of Nursing teacher labs, lecture and seminar rooms are located here.)
7. University Library
(The library is accessible 24 hours a day. It has the Information Workshop Space available for group work. There is also the LDC where self-directed study of English is possible.)

8. Basic Practical Training Building
9. Basic Clinical Research Building
(Located next to the University Hospital, there are medical offices for the various clinical departments, the Research Center for Child Mental Development, and facilities for cutting-edge medical research.)
10. Animal Laboratory
11. RI Laboratory
12. Graduate Student Research Wing
13. Pathological Anatomy Building
14. Plaza

15. Administration Building
(Health Center, Education Affairs Office)
(Consultations are available so that students can be healthy in both body and mind during their university life.)
16. University Hospital / Kiosk, Bookstore
(As a base hospital supporting the surrounding area, the University Hospital offers advanced medical care. Students from the School of Medical Sciences also complete practical training here.)
17. RI Treatment Ward
18. MRI-CT Building
19. Clinical Education Training Center
20. Medicine of Cyclotron Ward
21. Biomedical Imaging Research Center

Cafeteria "PLUM"

open 11:00am – 13:30pm (closed Saturdays and Sundays)
Reasonably-priced, nutritionally-balanced and delicious food is served here. Busy medical and nursing students are supported in their studies with quickly served meals.



Shop "PLUM"

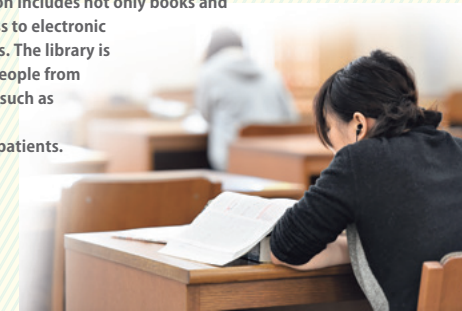
Matsuoka campus has a shop where you can buy ready-to-eat food, snacks, drinks, stationery goods, magazines, etc. to support your student life.



University Library

This library offers the latest medical-related information and full library facilities.

As a specialized library for medicine and nursing, the collection includes 130,000 books on the life sciences. The library mainly serves the students and teaching staff of the Matsuoka District with its School of Medical Sciences. This specialist collection includes not only books and journals but also access to electronic journals and databases. The library is used by a number of people from outside the university such as medical personnel, medical students and patients.



Education Affairs Office

This office deals with inquiries about academic matters, issuance of transcripts and other certificates, and requests for tuition fee exemptions etc.

International Affairs Division

This division provides a wide range of support services to international students. In order for international students to spend their student life smoothly, the division provides post-arrival and pre-departure orientation, as well as support for applications relating to qualifications, scholarships and housing.

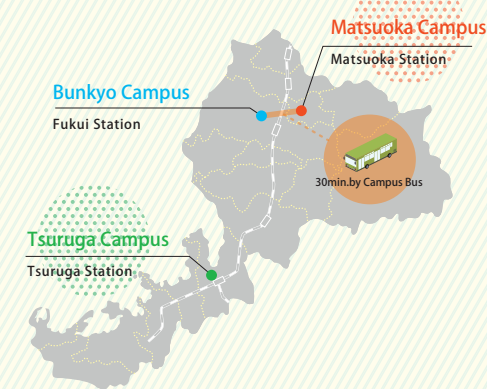
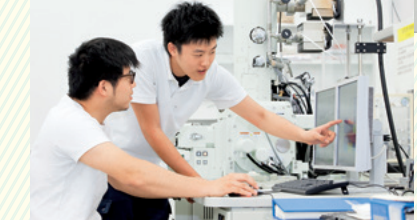


T

Tsuruga Campus

Research Institute of Nuclear Engineering

1-2-4 Kanawa-cho, Tsuruga-shi, Fukui 914-0055, Japan ● Tel: +81-770-25-0021



Future Career Path



Class as part of the International Student Employment Support Program

Career Support

At the University of Fukui, we provide full career support for students regardless of whether they are Japanese students or international students. Our career support includes providing the information of job offer from various companies, holding career fair at school and counseling on career opportunities for individuals. In the ranking of recruitment rate for new graduates, the University of Fukui has been successfully placed No.1 among a multi-faculted national university corporations for 9 years in a row. Through our career support, many international students go on to be successfully employed in Japan.

Messages from Graduates

The following are messages from international students who studied at the University of Fukui



Name Bae Jong Geun

- Current workplace : Sakai Chemical Group (Fukui Prefecture)
- Major at the University of Fukui : Regional Studies Course, Faculty of Education and Regional Studies (2012-2016)
- Nationality : South Korean

My global perspective expanded as a result of studying for four years at the University of Fukui and through my interactions with various Japanese students and other international students.

For example, I gained a thirst for new things such as cooking food and experiencing the cultures of other countries through interactions with others.

I wanted to make good use of these types of exchanges when I was looking for work in Japan.

Through my interactions with students not only from the same university school but also from different schools both inside and outside Fukui Prefecture, I became aware of different opinions and ways of thinking.

After starting at my company where I work with a number of other employees, I decided to base my communication on listening, since working with others is so important.

For that reason, I always try to understand my colleague's viewpoints and opinions when I do my work.



Name Alexander R. Guerrero, M.D., Ph.D.

- Current workplace : Service on Neurosurgery, Rosales National Hospital (University of El Salvador)
- Major at the University of Fukui : Advanced Biomedical Sciences Course, Graduate School of Medical Science (2009-2014)
- Nationality : El Salvador

My name is Alexander Guerrero; I am a physician who graduated from the University of El Salvador.

Upon finalizing my neurosurgical training in 2008, I applied to the Japanese Government Scholarships program (Ministry of Education, Culture, Sports, Science and Technology) and moved to Fukui Prefecture in April 2009.

The University of Fukui gave me the opportunity not only to receive the training. I was seeking for as a fellow in spine surgery in the Department of Orthopedic Surgery, but also to become a regular student of the university and get my PhD in Advanced Biomedical Sciences.

After graduating and moving back home in April 2014, I started a private practice and was recently admitted to our national neurosurgical society.

I am also an honorary staff member of the neurosurgery department where I graduated from, performing spine surgery for our patients with low incomes and no insurance, while supporting the research projects and graduation theses of the new residents.



Name Bao Zhenlong

- Current workplace : Yamaha Motor Co., Ltd.
- Major at the University of Fukui : Department of Mechanical Engineering Graduate School of Engineering (2012-2014)
- Nationality : Chinese

I graduated from the University of Fukui with a Master's degree in Engineering.

Now I am working for Yamaha Motor Co., Ltd. as an engine development engineer. My research is about material fatigue.

I learned a lot through the research at the university and also got a chance to present my research paper in London.

The University of Fukui took great force to improve English education and study abroad.

Therefore, I got the chance to be the first generation of student assistant and started a lot of English activities, which gave me chances to meet different people.

All of these experiences opened my eyes greatly and helped me to grow. Actually these experiences are also working good for my job. I enjoy my work every day, and do my best to make my dream come true.



Name Nguyen Van Vuong

- Current workplace : Maeda Kosen Co., Ltd.
- Major at the University of Fukui : Department of Applied Chemistry and Biotechnology, Faculty of Engineering (2011-2015)
- Nationality : Vietnamese

After graduating from a Japanese language school in Tokyo, I decided to go to the University of Fukui (UF) because I heard that the UF student employment rate is ranked No.1 among Japanese national university corporations with multiple schools.

I entered the Department of Applied Chemistry and Biotechnology, gained a lot of knowledge, and conducted chemical experiments taught by dedicated instructors. Thanks to them, I enjoyed studying every day. The knowledge I acquired at UF is useful in my present work.

Now I am working for a manufacturer and I use the knowledge I obtained about chemical components and experiments to develop high quality products.

Now I think that I made the right choice in selecting the UF. The university openly accepts international students and, due to its strong connection with private companies, it really helps students to find work.

I am working hard to contribute to society, feeling proud that I was a student of UF.



Name Mohammad Abu Yousuf

- Current workplace : Professor, Department of Chemistry Khulna University of Engineering & Technology
- Major at the University of Fukui : Department of Applied Physics of Faculty of Fiber Amenity Engineering (2002-2005)
- Nationality : Bangladeshi

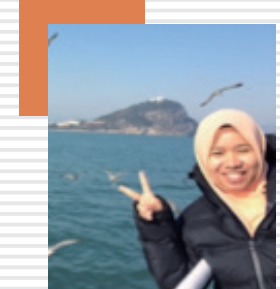
I studied at the University of Fukui for three years from October 2002 to September 2005. I got a Ph.D. from the Department of Applied Physics of Faculty of Fiber Amenity Engineering. My Supervisor was Prof. Koichi Aoki. My research field was electro-chemistry and fabrication of large thin film of conducting polymer.

I got full-time MEXT scholarship during my study. At present I am a professor in the Department of Chemistry at Khulna University of Engineering Technology, Bangladesh.

I will never forget the dedication and compassion of my Japanese professors. I will not also forget my mentor Jingyuan Chen, Associate Professor and also my lab members. I would like to show my respect and salute all of them for making me a better teacher as well as a better person.

I acquired a huge knowledge for research strategies and methods in the field of electro-chemistry during my Ph.D. So, in one sense the University of Fukui as well as helped me a lot.

Thank you so much, the University of Fukui and Japan.



Name Irra Syardilla

- Current workplace : HOYA Corporation PENTAX Lifecare Division
- Major at the University of Fukui : Electrical and Electronics Engineering, Graduated School of Engineering (2013-2015)
- Nationality : Malaysian

I graduated from the University of Fukui with a degree in Electrical and Electronics Engineering.

Through my study in the university, I learned how to interact with other students not only from our home country friends but also other ones.

I got involved in lots of university activities especially event in the LDC and also the Global Hub. After graduating from the university, I joined HOYA Corporation as a supply chain member.

My role is to handle domestic as well as international suppliers.

Those experiences I gained from study in the University of Fukui do help me to get used to current working environment. I will continue to do my best to contribute to the company and also society.

I am really grateful to professors and friends who help me a lot during my studies. I am proud to be one of the students of the University of Fukui.

Admission Information

The University of Fukui is the only one national university corporation in Fukui Prefecture. As a center for education and culture, and based on a high sense of ethics, the university aims to nurture individuals who can contribute to the region, the country, and the global society. It also aims to provide a creative place for educational and scientific research unique to the region, the latest scientific and technological research, as well as medical research and specialized medicine.

At the University of Fukui, in 2016 we reorganized our faculties and created new ones, so there are now four schools: the School of Education, the School of Medical Sciences, the School of Engineering, and the School of Global and Community Studies.

In addition, in the Graduate School of Engineering in the Master's and Doctoral courses, there are a GEPIS course and a GEP for R&D course which mainly consists of classes taught in English and research guidance (Please see pp.15-16 to know about GEPIS and GEP for R&D).

The schedule for the main entrance examinations designed for international students is as follows.

Admission schedule

Schools	School of Global and Community Studies		School of Engineering
	Examination for Privately-Financed International Student	Examination for Privately-Financed International Student (Examination taken prior to coming to Japan)	Privately-Financed International Student
Publication of Application Guidelines	October	March	October
Capacity	small number of people	small number	small number
Application Period	late January	early October	late January
Examination	early February	late October	early February
Notification of Acceptance	late January	early November	late February
Admission Procedures	early February	early March	early March

Graduate School	Graduate School of Engineering Master's Program		Graduate School of Engineering Doctoral Program	
	Special Admission for International Students	GEPIS Course: October / April admission (Examination taken prior to coming to Japan)	Special Admission for International Students	GEP for R&D : October/April (Examination taken prior to coming to Japan)
Publication of Application Guidelines	October	December	Mid-May	December
Capacity	small number	small number	Confirmation of Guidelines for Applicants	small number of people
Application Period	late January	mid-April/mid-October	late August	mid-April/mid-October
Examination	early February	—	early September	—
Notification of Acceptance	late January	late May / late November	mid-September	late May / late November
Admission Procedures	early February	late Sept. / late March	mid-November	late Sept. / late March

■ Admission dates are subject to change.

Check the Guidelines for Applicants on the University of Fukui website for details such as qualifications required for application.

● http://www.u-fukui.ac.jp/eng/admission_information/faculties.html

University of Fukui Enrollment / Tuition Fees

Students must make payment of the specified tuition and other fees by the due date. Fees are as below (as of 2016).

Note that if a revision of enrollment or tuition fees is made at the time of admission or while enrolled, the post-revision amount will apply from when the revision is made.

(JPY)

Classification		Application Fee	Admission Fee	Tuition Fee	
Degree seeking student	Undergraduate	* 17,000	282,000	fee for ½ Year	267,900
	Graduate	30,000	282,000	fee for ½ Year	267,900
Non-degree seeking student	Research student	9,800	84,600	monthly fee	29,700
	Credit student	9,800	28,200	per credit	14,800

* Regardless of the above, the application fee for undergraduate students transferring universities application fee is ¥30,000.

Tuition fees are to be paid in April and in October in two half-installments.

■ Enrollment fee and tuition fee exemption

In order to support undergraduate and graduate students with high academic ability but demonstrated financial need, payment extensions and exemptions for admission and tuition fees are available. This system is only available for degree-seeking students.

Exemptions and extensions for payment of enrollment fees are only available until the first day of the enrollment period. The period for application for an exemption of tuition fees is March (April for new students) for the first semester, and September for the second semester.

■ Scholarships

After enrollment, privately-financed international students can apply for various private scholarship grants.

The university noticeboard provides information on these scholarship grants. For further details, please contact the International Affairs Division.